

## Anti-Phospho-MAP2K7-Thr275 antibody (210-290) (STJ90586)

STJ90586

### GENERAL INFORMATION

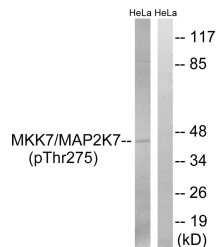
<b>Product Type</b>	Primary antibodies
<b>Short Description</b>	Rabbit polyclonal antibody anti-Phospho-Dual Specificity Mitogen-Activated Protein Kinase Kinase 7-Thr275 (210-290) is suitable for use in Western Blot, Immunohistochemistry, Immunofluorescence and ELISA research applications.
<b>Applications</b>	WB, IHC-P, IF-P, ELISA
<b>Host/Source</b>	Rabbit
<b>Reactivity</b>	Human, Mouse, Rat

### PRODUCT PROPERTIES

<b>Clonality</b>	Polyclonal
<b>Clone ID</b>	
<b>Concentration</b>	1 mg/mL
<b>Conjugation</b>	Unconjugated
<b>Purification</b>	The antibody was affinity-purified from rabbit anti-serum by affinity-chromatography.
<b>Dilution Range</b>	WB 1:500-1:2000 IHC 1:100-1:300 ELISA 1:20000
<b>Formulation</b>	PBS, 50% Glycerol, 0.5% BSA and 0.02% Sodium Azide.
<b>Isotype</b>	IgG
<b>Storage Instruction</b>	Store at -20°C for up to 1 year from the date of receipt, and avoid repeat freeze-thaw cycles.

### TARGET INFORMATION

<b>Gene ID</b>	5609
<b>Gene Symbol</b>	MAP2K7
<b>Uniprot ID</b>	MP2K7_HUMAN
<b>Immunogen</b>	The antiserum was produced against synthesized peptide derived from human MAP2K7 around the phosphorylation site of Thr275 at amino acid range 241-290
<b>Immunogen Region</b>	210-290
<b>Specificity</b>	Phospho-MAP2K7-Thr275 polyclonal antibody (Dual Specificity Mitogen-Activated Protein Kinase Kinase 7) binds to endogenous Dual Specificity Mitogen-Activated Protein Kinase Kinase 7 at the amino acid region 210-290 only when phosphorylated at Thr275.
<b>Immunogen Sequence</b>	



Western blot analysis of lysates from HeLa cells treated with calyculinA 50ng/ml 30', using MAP2K7 (Phospho-Thr275) Antibody. The lane on the right is blocked with the phospho peptide.

This product is suitable for in-vitro studies under the RESEARCH USE ONLY [RUO] licence. This product must not be used as for diagnostic or other medical purposes.  
St John's Laboratory Ltd, Knowledge Dock Business Centre, University Way, London, E16 2RD | Tel: 0208 223 3081