

Anti-Phospho-MAK-Tyr159 antibody (100-180) (STJ90583)

STJ90583

GENERAL INFORMATION

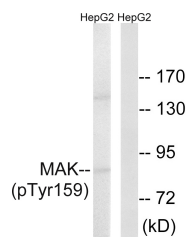
Product Type	Primary antibodies
Short Description	Rabbit polyclonal antibody anti-Phospho-Serine/Threonine-Protein Kinase Mak-Tyr159 (100-180) is suitable for use in Western Blot and ELISA research applications.
Applications	WB, ELISA
Host/Source	Rabbit
Reactivity	Human, Mouse, Rat

PRODUCT PROPERTIES

Clonality	Polyclonal
Clone ID	
Concentration	1 mg/mL
Conjugation	Unconjugated
Purification	The antibody was affinity-purified from rabbit anti-serum by affinity-chromatography.
Dilution	WB 1:500-1:2000
Range	ELISA 1:40000
Formulation	PBS, 50% Glycerol, 0.5% BSA and 0.02% Sodium Azide.
Isotype	IgG
Storage Instruction	Store at -20°C for up to 1 year from the date of receipt, and avoid repeat freeze-thaw cycles.

TARGET INFORMATION

Gene ID	4117
Gene Symbol	MAK
Uniprot ID	MAK_HUMAN
Immunogen	The antiserum was produced against synthesized peptide derived from human MAK around the phosphorylation site of Tyr159 at amino acid range 126-175
Immunogen Region	100-180
Specificity	Phospho-MAK-Tyr159 polyclonal antibody (Serine/Threonine-Protein Kinase Mak) binds to endogenous Serine/Threonine-Protein Kinase Mak at the amino acid region 100-180 only when phosphorylated at Tyr159.
Immunogen Sequence	



Western blot analysis of lysates from HepG2 cells treated with PMA 125ng/ml 30', using MAK (Phospho-Tyr159) Antibody. The lane on the right is blocked with the phospho peptide.

This product is suitable for in-vitro studies under the RESEARCH USE ONLY [RUO] licence. This product must not be used as for diagnostic or other medical purposes.
 St John's Laboratory Ltd, Knowledge Dock Business Centre, University Way, London, E16 2RD | Tel: 0208 223 3081