

Anti-Phospho-FLT3-Tyr842 antibody (780-860) (STJ90580)

STJ90580

GENERAL INFORMATION

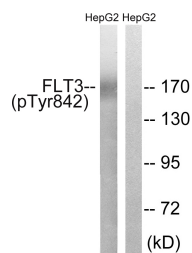
Product Type	Primary antibodies
Short Description	Rabbit polyclonal antibody anti-Phospho-Receptor-Type Tyrosine-Protein Kinase Flt3-Tyr842 (780-860) is suitable for use in Western Blot and ELISA research applications.
Applications	WB, ELISA
Host/Source	Rabbit
Reactivity	Human, Mouse

PRODUCT PROPERTIES

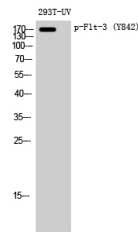
Clonality	Polyclonal
Clone ID	
Concentration	1 mg/mL
Conjugation	Unconjugated
Purification	The antibody was affinity-purified from rabbit anti-serum by affinity-chromatography.
Dilution	WB 1:500-1:2000
Range	ELISA 1:10000
Formulation	PBS, 50% Glycerol, 0.5% BSA and 0.02% Sodium Azide.
Isotype	IgG
Storage	Store at -20°C for up to 1 year from the date of receipt, and avoid repeat freeze-thaw cycles.
Instruction	

TARGET INFORMATION

Gene ID	2322
Gene Symbol	FLT3
Uniprot ID	FLT3_HUMAN
Immunogen	The antiserum was produced against synthesized peptide derived from human FLT3 around the phosphorylation site of Tyr842 at amino acid range 808-857
Immunogen Region	780-860
Specificity	Phospho-FLT3-Tyr842 polyclonal antibody (Receptor-Type Tyrosine-Protein Kinase Flt3) binds to endogenous Receptor-Type Tyrosine-Protein Kinase Flt3 at the amino acid region 780-860 only when phosphorylated at Tyr842.
Immunogen Sequence	



Western blot analysis of lysates from HepG2 cells treated with EGF 200ng/ml 30', using FLT3 (Phospho-Tyr842) Antibody. The lane on the right is blocked with the phospho peptide.



Western blot analysis of 293T-UV cells using Phospho-Flt-3 (Y842) Polyclonal Antibody diluted at 1: 1000

This product is suitable for in-vitro studies under the RESEARCH USE ONLY [RUO] licence. This product must not be used as for diagnostic or other medical purposes.
 St John's Laboratory Ltd, Knowledge Dock Business Centre, University Way, London, E16 2RD | Tel: 0208 223 3081