

Anti-Phospho-ABL1-Thr735 antibody (670-750) (STJ90579)

STJ90579

GENERAL INFORMATION

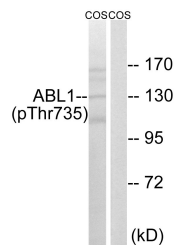
Product Type	Primary antibodies
Short Description	Rabbit polyclonal antibody anti-Phospho-Tyrosine-Protein Kinase Abl1-Thr735 (670-750) is suitable for use in Western Blot, Immunohistochemistry, Immunofluorescence and ELISA research applications.
Applications	WB, IHC-P, IF-P, ELISA
Host/Source	Rabbit
Reactivity	Human, Mouse, Rat, Monkey

PRODUCT PROPERTIES

Clonality	Polyclonal
Clone ID	
Concentration	1 mg/mL
Conjugation	Unconjugated
Purification	The antibody was affinity-purified from rabbit anti-serum by affinity-chromatography.
Dilution Range	WB 1:500-1:2000 IHC 1:100-1:300 ELISA 1:5000
Formulation	PBS, 50% Glycerol, 0.5% BSA and 0.02% Sodium Azide.
Isotype	IgG
Storage Instruction	Store at 20°C for up to 1 year from the date of receipt, and avoid repeat freeze-thaw cycles.

TARGET INFORMATION

Gene ID	25
Gene Symbol	ABL1
Uniprot ID	ABL1_HUMAN
Immunogen	The antiserum was produced against synthesized peptide derived from human ABL1 around the phosphorylation site of Thr735 at amino acid range 701-750
Immunogen Region	670-750
Specificity	Phospho-ABL1-Thr735 polyclonal antibody (Tyrosine-Protein Kinase Abl1) binds to endogenous Tyrosine-Protein Kinase Abl1 at the amino acid region 670-750 only when phosphorylated at Thr735.
Immunogen Sequence	



Western blot analysis of lysates from COS7 cells treated with EGF 200ng/ml 30', using ABL1 (Phospho-Thr735) Antibody. The lane on the right is blocked with the phospho peptide.

This product is suitable for in-vitro studies under the RESEARCH USE ONLY [RUO] licence. This product must not be used as for diagnostic or other medical purposes.
St John's Laboratory Ltd, Knowledge Dock Business Centre, University Way, London, E16 2RD | Tel: 0208 223 3081