

## Anti-Phospho-MAPT-Thr534 antibody (150-230) (STJ90577)

STJ90577

### GENERAL INFORMATION

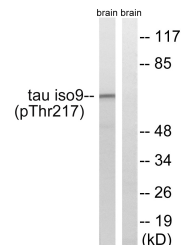
|                          |  |
|--------------------------|--|
| <b>Product Type</b>      | Primary antibodies   |
| <b>Short Description</b> | Rabbit polyclonal antibody anti-Phospho-Microtubule-Associated Protein Tau-Thr534 (150-230) is suitable for use in Western Blot, Immunohistochemistry, Immunofluorescence and ELISA research applications. |
| <b>Applications</b>      | WB, IHC-P, IF-P, ELISA   |
| <b>Host/Source</b>       | Rabbit   |
| <b>Reactivity</b>        | Human, Mouse, Rat  |

### PRODUCT PROPERTIES

|                            |  |
|----------------------------|--|
| <b>Clonality</b>           | Polyclonal   |
| <b>Clone ID</b>            |  |
| <b>Concentration</b>       | 1 mg/mL  |
| <b>Conjugation</b>         | Unconjugated   |
| <b>Purification</b>        | The antibody was affinity-purified from rabbit anti-serum by affinity-chromatography.          |
| <b>Dilution Range</b>      | WB 1:500-1:2000<br>IHC 1:100-1:300<br>ELISA 1:5000   |
| <b>Formulation</b>         | PBS, 50% Glycerol, 0.5% BSA and 0.02% Sodium Azide.  |
| <b>Isotype</b>             | IgG  |
| <b>Storage Instruction</b> | Store at -20°C for up to 1 year from the date of receipt, and avoid repeat freeze-thaw cycles. |

### TARGET INFORMATION

|                           |  |
|---------------------------|--|
| <b>Gene ID</b>            | 4137   |
| <b>Gene Symbol</b>        | MAPT   |
| <b>Uniprot ID</b>         | TAU_HUMAN  |
| <b>Immunogen</b>          | The antiserum was produced against synthesized peptide derived from human Tau around the phosphorylation site of Thr534/217 at amino acid range 181-230  |
| <b>Immunogen Region</b>   | 150-230  |
| <b>Specificity</b>        | Phospho-MAPT-Thr534 polyclonal antibody (Microtubule-Associated Protein Tau) binds to endogenous Microtubule-Associated Protein Tau at the amino acid region 150-230 only when phosphorylated at Thr534. |
| <b>Immunogen Sequence</b> |  |



Western blot analysis of lysates from rat brain, using Tau (Phospho-Thr534/217) Antibody. The lane on the right is blocked with the phospho peptide.