

Anti-Phospho-TP53-Ser378 antibody (320-400) (STJ90574)

STJ90574

GENERAL INFORMATION

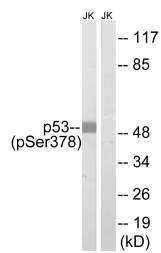
Product Type	Primary antibodies
Short Description	Rabbit polyclonal antibody anti-Phospho-Cellular Tumor antigen P53-Ser378 (320-400) is suitable for use in Western Blot and ELISA research applications.
Applications	WB, ELISA
Host/Source	Rabbit
Reactivity	Human, Mouse, Rat

PRODUCT PROPERTIES

Clonality	Polyclonal
Clone ID	
Concentration	1 mg/mL
Conjugation	Unconjugated
Purification	The antibody was affinity-purified from rabbit anti-serum by affinity-chromatography.
Dilution Range	WB 1:500-1:2000 ELISA 1:20000
Formulation	PBS, 50% Glycerol, 0.5% BSA and 0.02% Sodium Azide.
Isotype	IgG
Storage	Store at -20°C for up to 1 year from the date of receipt, and avoid repeat freeze-thaw cycles.
Instruction	

TARGET INFORMATION

Gene ID	7157
Gene Symbol	TP53
Uniprot ID	P53_HUMAN
Immunogen	The antiserum was produced against synthesized peptide derived from human p53 around the phosphorylation site of Ser378 at amino acid range 344-393
Immunogen Region	320-400
Specificity	Phospho-TP53-Ser378 polyclonal antibody (Cellular Tumor Antigen P53) binds to endogenous Cellular Tumor Antigen P53 at the amino acid region 320-400 only when phosphorylated at Ser378.
Immunogen Sequence	



Western blot analysis of lysates from Jurkat cells treated with UV 15', using p53 (Phospho-Ser378) Antibody. The lane on the right is blocked with the phospho peptide.