

Anti-Phospho-NR3C1-Ser203 antibody (140-220) (STJ90572)

STJ90572

GENERAL INFORMATION

Product Type	Primary antibodies
Short Description	Rabbit polyclonal antibody anti-Phospho-Glucocorticoid Receptor-Ser203 (140-220) is suitable for use in Western Blot and ELISA research applications.
Applications	WB, ELISA
Host/Source	Rabbit
Reactivity	Human, Mouse

PRODUCT PROPERTIES

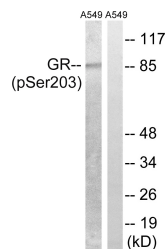
Clonality	Polyclonal
Clone ID	
Concentration	1 mg/mL
Conjugation	Unconjugated
Purification	The antibody was affinity-purified from rabbit anti-serum by affinity-chromatography.
Dilution Range	WB 1:500-1:2000 ELISA 1:10000
Formulation	PBS, 50% Glycerol, 0.5% BSA and 0.02% Sodium Azide.
Isotype	IgG
Storage Instruction	Store at -20°C for up to 1 year from the date of receipt, and avoid repeat freeze-thaw cycles.

TARGET INFORMATION

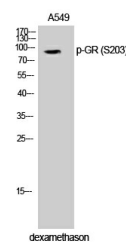
Gene ID	2908
Gene Symbol	NR3C1
Uniprot ID	GCR_HUMAN
Immunogen	The antiserum was produced against synthesized peptide derived from human GR around the phosphorylation site of Ser203 at amino acid range 171-220
Immunogen Region	140-220
Specificity	Phospho-NR3C1-Ser203 polyclonal antibody (Glucocorticoid Receptor) binds to endogenous Glucocorticoid Receptor at the amino acid region 140-220 only when phosphorylated at Ser203.
Immunogen Sequence	



Western blot analysis of HELA 293T 453 cells using Phospho-GR (S203) Polyclonal Antibody diluted at 1:500



Western blot analysis of lysates from A549 cells treated with dexamethasone 10nM 1h, using GR (Phospho-Ser203) Antibody. The lane on the right is blocked with the phospho peptide.



Western blot analysis of A549 cells using Phospho-GR (S203) Polyclonal Antibody diluted at 1:500