

Anti-Phospho-EZR-Tyr478 antibody (420-500) (STJ90570)

STJ90570

GENERAL INFORMATION

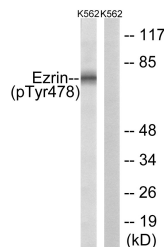
Product Type	Primary antibodies
Short Description	Rabbit polyclonal antibody anti-Phospho-Ezrin-Tyr478 (420-500) is suitable for use in Western Blot, Immunohistochemistry, Immunofluorescence and ELISA research applications.
Applications	WB, IHC-P, IF-P, ELISA
Host/Source	Rabbit
Reactivity	Human, Mouse, Rat

PRODUCT PROPERTIES

Clonality	Polyclonal
Clone ID	
Concentration	1 mg/mL
Conjugation	Unconjugated
Purification	The antibody was affinity-purified from rabbit anti-serum by affinity-chromatography.
Dilution Range	WB 1:500-1:2000 IHC 1:100-1:300 ELISA 1:5000
Formulation	PBS, 50% Glycerol, 0.5% BSA and 0.02% Sodium Azide.
Isotype	IgG
Storage Instruction	Store at -20°C for up to 1 year from the date of receipt, and avoid repeat freeze-thaw cycles.

TARGET INFORMATION

Gene ID	7430
Gene Symbol	EZR
Uniprot ID	EZRI_HUMAN
Immunogen	The antiserum was produced against synthesized peptide derived from human Ezrin around the phosphorylation site of Tyr478 at amino acid range 446-495
Immunogen Region	420-500
Specificity	Phospho-EZR-Tyr478 polyclonal antibody (Ezrin) binds to endogenous Ezrin at the amino acid region 420-500 only when phosphorylated at Tyr478.
Immunogen Sequence	



Western blot analysis of Ezrin (Phospho-Tyr478) Antibody. The lane on the right is blocked with the Ezrin (Phospho-Tyr478) peptide.