

## Anti-Phospho-CASP8-Tyr380 antibody (320-400) (STJ90563)

STJ90563

### GENERAL INFORMATION

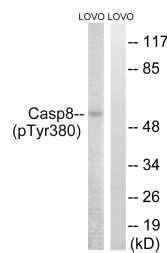
<b>Product Type</b>	Primary antibodies
<b>Short Description</b>	Rabbit polyclonal antibody anti-Phospho-Caspase-8-Tyr380 (320-400) is suitable for use in Western Blot and ELISA research applications.
<b>Applications</b>	WB, ELISA
<b>Host/Source</b>	Rabbit
<b>Reactivity</b>	Human, Rat, Mouse

### PRODUCT PROPERTIES

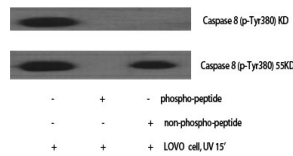
<b>Clonality</b>	Polyclonal
<b>Clone ID</b>	
<b>Concentration</b>	1 mg/mL
<b>Conjugation</b>	Unconjugated
<b>Purification</b>	The antibody was affinity-purified from rabbit anti-serum by affinity-chromatography.
<b>Dilution Range</b>	WB 1:500-1:2000 ELISA 1:10000
<b>Formulation</b>	PBS, 50% Glycerol, 0.5% BSA and 0.02% Sodium Azide.
<b>Isotype</b>	IgG
<b>Storage Instruction</b>	Store at -20°C for up to 1 year from the date of receipt, and avoid repeat freeze-thaw cycles.

### TARGET INFORMATION

<b>Gene ID</b>	841
<b>Gene Symbol</b>	CASP8
<b>Uniprot ID</b>	CASP8_HUMAN
<b>Immunogen</b>	The antiserum was produced against synthesized peptide derived from human Caspase 8 around the phosphorylation site of Tyr380 at amino acid range 346-395
<b>Immunogen Region</b>	320-400
<b>Specificity</b>	Phospho-CASP8-Tyr380 polyclonal antibody (Caspase-8) binds to endogenous Caspase-8 at the amino acid region 320-400 only when phosphorylated at Tyr380.
<b>Immunogen Sequence</b>	



Western blot analysis of lysates from LOVO cells treated with UV 15', using Caspase 8 (Phospho-Tyr380) Antibody. The lane on the right is blocked with the phospho peptide.



Western blot analysis of various cells using Phospho-Caspase-8 (Y380) Polyclonal Antibody