

Anti-Phospho-14-3-3 Beta/Zeta-Ser184/186 antibody (120-200) (STJ90562)

STJ90562

GENERAL INFORMATION

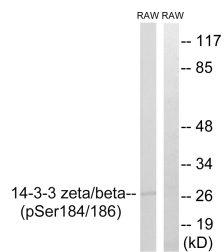
Product Type	Primary antibodies
Short Description	Rabbit polyclonal antibody anti-Phospho-14-3-3 protein zeta/delta and 14-3-3 protein beta/alpha-Ser184/186 (120-200) is suitable for use in Western Blot and ELISA research applications.
Applications	WB, ELISA
Host/Source	Rabbit
Reactivity	Human, Mouse, Rat

PRODUCT PROPERTIES

Clonality	Polyclonal
Clone ID	
Concentration	1 mg/mL
Conjugation	Unconjugated
Purification	The antibody was affinity-purified from rabbit anti-serum by affinity-chromatography.
Dilution	WB 1:500-1:2000
Range	ELISA 1:5000
Formulation	PBS, 50% Glycerol, 0.5% BSA and 0.02% Sodium Azide.
Isotype	IgG
Storage	Store at -20°C for up to 1 year from the date of receipt, and avoid repeat freeze-thaw cycles.
Instruction	

TARGET INFORMATION

Gene ID	7534 7529
Gene Symbol	YWHAZ YWHAB
Uniprot ID	1433Z_HUMAN 1433B_HUMAN
Immunogen	The antiserum was produced against synthesized peptide derived from human 14-3-3 beta/zeta around the phosphorylation site of Ser184/186 at amino acid range 151-200
Immunogen Region	120-200
Specificity	Phospho-14-3-3 Beta/Zeta-Ser184/186 polyclonal antibody (14-3-3 protein zeta/delta and 14-3-3 protein beta/alpha) binds to endogenous 14-3-3 protein zeta/delta and 14-3-3 protein beta/alpha at the amino acid region 120-200 only when phosphorylated at
Immunogen Sequence	



Western blot analysis of lysates from RAW264.7 cells treated with UV 15', using 14-3-3 beta/zeta (Phospho-Ser184/186) Antibody. The lane on the right is blocked with the phospho peptide.

This product is suitable for in-vitro studies under the RESEARCH USE ONLY [RUO] licence. This product must not be used as for diagnostic or other medical purposes.
St John's Laboratory Ltd, Knowledge Dock Business Centre, University Way, London, E16 2RD | Tel: 0208 223 3081