

Anti-Phospho-WRN-Ser1141 antibody (1080-1160) (STJ90561)

STJ90561

GENERAL INFORMATION

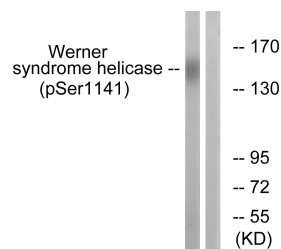
Product Type	Primary antibodies
Short Description	Rabbit polyclonal antibody anti-Phospho-Werner Syndrome Atp-Dependent Helicase-Ser1141 (1080-1160) is suitable for use in Western Blot and ELISA research applications.
Applications	WB, ELISA
Host/Source	Rabbit
Reactivity	Human, Rat, Mouse

PRODUCT PROPERTIES

Clonality	Polyclonal
Clone ID	
Concentration	1 mg/mL
Conjugation	Unconjugated
Purification	The antibody was affinity-purified from rabbit anti-serum by affinity-chromatography.
Dilution	WB 1:500-1:2000
Range	ELISA 1:5000
Formulation	PBS, 50% Glycerol, 0.5% BSA and 0.02% Sodium Azide.
Isotype	IgG
Storage	Store at -20°C for up to 1 year from the date of receipt, and avoid repeat freeze-thaw cycles.
Instruction	

TARGET INFORMATION

Gene ID	7486
Gene Symbol	WRN
Uniprot ID	WRN_HUMAN
Immunogen	The antiserum was produced against synthesized peptide derived from human Werner Syndrome Helicase around the phosphorylation site of Ser1141 at amino acid range 1107-1156
Immunogen Region	1080-1160
Specificity	Phospho-WRN-Ser1141 polyclonal antibody (Werner Syndrome Atp-Dependent Helicase) binds to endogenous Werner Syndrome Atp-Dependent Helicase at the amino acid region 1080-1160 only when phosphorylated at Ser1141.
Immunogen Sequence	



Western blot analysis of lysates from K562 cells treated with etoposide 25µM 24h, using Werner Syndrome Helicase (Phospho-Ser1141) Antibody. The lane on the right is blocked with the phospho peptide.