

Anti-Phospho-RGS16-Tyr168 antibody (110-190) (STJ90557)

STJ90557

GENERAL INFORMATION

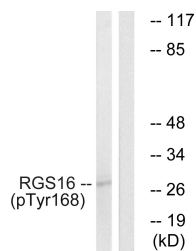
Product Type	Primary antibodies
Short Description	Rabbit polyclonal antibody anti-Phospho-Regulator Of G-Protein Signaling 16-Tyr168 (110-190) is suitable for use in Western Blot and ELISA research applications.
Applications	WB, ELISA
Host/Source	Rabbit
Reactivity	Human, Mouse, Rat, Monkey

PRODUCT PROPERTIES

Clonality	Polyclonal
Clone ID	
Concentration	1 mg/mL
Conjugation	Unconjugated
Purification	The antibody was affinity-purified from rabbit anti-serum by affinity-chromatography.
Dilution	WB 1:500-1:2000
Range	ELISA 1:10000
Formulation	PBS, 50% Glycerol, 0.5% BSA and 0.02% Sodium Azide.
Isotype	IgG
Storage	Store at -20°C for up to 1 year from the date of receipt, and avoid repeat freeze-thaw cycles.
Instruction	

TARGET INFORMATION

Gene ID	6004
Gene Symbol	RGS16
Uniprot ID	RGS16_HUMAN
Immunogen	The antiserum was produced against synthesized peptide derived from human RGS16 around the phosphorylation site of Tyr168 at amino acid range 141-190
Immunogen Region	110-190
Specificity	Phospho-RGS16-Tyr168 polyclonal antibody (Regulator Of G-Protein Signaling 16) binds to endogenous Regulator Of G-Protein Signaling 16 at the amino acid region 110-190 only when phosphorylated at Tyr168.
Immunogen Sequence	



This product is suitable for in-vitro studies under the RESEARCH USE ONLY [RUO] licence. This product must not be used as for diagnostic or other medical purposes.
 St John's Laboratory Ltd, Knowledge Dock Business Centre, University Way, London, E16 2RD | Tel: 0208 223 3081