

Anti-Phospho-FOXL2-Ser263 antibody (200-280) (STJ90553)

STJ90553

GENERAL INFORMATION

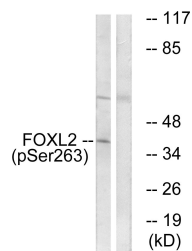
Product Type	Primary antibodies
Short Description	Rabbit polyclonal antibody anti-Phospho-Forkhead Box Protein L2-Ser263 (200-280) is suitable for use in Western Blot and ELISA research applications.
Applications	WB, ELISA
Host/Source	Rabbit
Reactivity	Human, Mouse

PRODUCT PROPERTIES

Clonality	Polyclonal
Clone ID	
Concentration	1 mg/mL
Conjugation	Unconjugated
Purification	The antibody was affinity-purified from rabbit anti-serum by affinity-chromatography.
Dilution Range	WB 1:500-1:2000 ELISA 1:20000
Formulation	PBS, 50% Glycerol, 0.5% BSA and 0.02% Sodium Azide.
Isotype	IgG
Storage	Store at -20°C for up to 1 year from the date of receipt, and avoid repeat freeze-thaw cycles.
Instruction	

TARGET INFORMATION

Gene ID	668
Gene Symbol	FOXL2
Uniprot ID	FOXL2_HUMAN
Immunogen	The antiserum was produced against synthesized peptide derived from human FOXL2 around the phosphorylation site of Ser263 at amino acid range 229-278
Immunogen Region	200-280
Specificity	Phospho-FOXL2-Ser263 polyclonal antibody (Forkhead Box Protein L2) binds to endogenous Forkhead Box Protein L2 at the amino acid region 200-280 only when phosphorylated at Ser263.
Immunogen Sequence	



This product is suitable for in-vitro studies under the RESEARCH USE ONLY [RUO] licence. This product must not be used as for diagnostic or other medical purposes.
St John's Laboratory Ltd, Knowledge Dock Business Centre, University Way, London, E16 2RD | Tel: 0208 223 3081