

## Anti-Phospho-WEE1-Ser642 antibody (580-660) (STJ90550)

STJ90550

### GENERAL INFORMATION

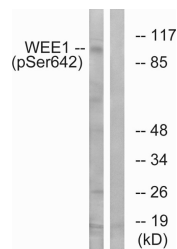
|                          |  |
|--------------------------|--|
| <b>Product Type</b>      | Primary antibodies   |
| <b>Short Description</b> | Rabbit polyclonal antibody anti-Phospho-Wee1-Like Protein Kinase-Ser642 (580-660) is suitable for use in Western Blot and ELISA research applications. |
| <b>Applications</b>      | WB, ELISA  |
| <b>Host/Source</b>       | Rabbit   |
| <b>Reactivity</b>        | Human, Mouse, Rat  |

### PRODUCT PROPERTIES

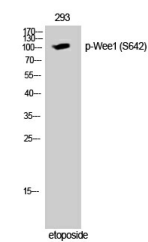
|                       |  |
|-----------------------|--|
| <b>Clonality</b>      | Polyclonal   |
| <b>Clone ID</b>       |  |
| <b>Concentration</b>  | 1 mg/mL  |
| <b>Conjugation</b>    | Unconjugated   |
| <b>Purification</b>   | The antibody was affinity-purified from rabbit anti-serum by affinity-chromatography.          |
| <b>Dilution Range</b> | WB 1:500-1:2000<br>ELISA 1:5000  |
| <b>Formulation</b>    | PBS, 50% Glycerol, 0.5% BSA and 0.02% Sodium Azide.  |
| <b>Isotype</b>        | IgG  |
| <b>Storage</b>        | Store at -20°C for up to 1 year from the date of receipt, and avoid repeat freeze-thaw cycles. |
| <b>Instruction</b>    |  |

### TARGET INFORMATION

|                           |  |
|---------------------------|--|
| <b>Gene ID</b>            | 7465   |
| <b>Gene Symbol</b>        | WEE1   |
| <b>Uniprot ID</b>         | WEE1_HUMAN   |
| <b>Immunogen</b>          | The antiserum was produced against synthesized peptide derived from human WEE1 around the phosphorylation site of Ser642 at amino acid range 597-646                                 |
| <b>Immunogen Region</b>   | 580-660  |
| <b>Specificity</b>        | Phospho-WEE1-Ser642 polyclonal antibody (Wee1-Like Protein Kinase) binds to endogenous Wee1-Like Protein Kinase at the amino acid region 580-660 only when phosphorylated at Ser642. |
| <b>Immunogen Sequence</b> |  |



Western blot analysis of lysates from 293 cells treated with etoposide 25uM 60', using WEE1 (Phospho-Ser642) Antibody. The lane on the right is blocked with the phospho peptide.



Western blot analysis of 293 cells using Phospho-Wee1 (S642) Polyclonal Antibody cells nucleus extracted by Minute TM Cytoplasmic and Nuclear Fractionation kit (SC-003, Inventibiotec, MN, USA).

This product is suitable for in-vitro studies under the RESEARCH USE ONLY [RUO] licence. This product must not be used as for diagnostic or other medical purposes.  
St John's Laboratory Ltd, Knowledge Dock Business Centre, University Way, London, E16 2RD | Tel: 0208 223 3081