

Anti-Phospho-ZFP36L1-Ser92 antibody (30-110) (STJ90549)

STJ90549

GENERAL INFORMATION

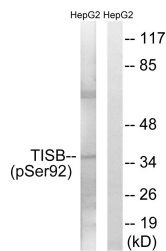
Product Type	Primary antibodies
Short Description	Rabbit polyclonal antibody anti-Phospho-Mrna Decay Activator Protein Zfp36l1-Ser92 (30-110) is suitable for use in Western Blot and ELISA research applications.
Applications	WB, ELISA
Host/Source	Rabbit
Reactivity	Human, Mouse, Rat

PRODUCT PROPERTIES

Clonality	Polyclonal
Clone ID	
Concentration	1 mg/mL
Conjugation	Unconjugated
Purification	The antibody was affinity-purified from rabbit anti-serum by affinity-chromatography.
Dilution	WB 1:500-1:2000
Range	ELISA 1:10000
Formulation	PBS, 50% Glycerol, 0.5% BSA and 0.02% Sodium Azide.
Isotype	IgG
Storage	Store at-20°C for up to 1 year from the date of receipt, and avoid repeat freeze-thaw cycles.
Instruction	

TARGET INFORMATION

Gene ID	677
Gene Symbol	ZFP36L1
Uniprot ID	TISB_HUMAN
Immunogen	The antiserum was produced against synthesized peptide derived from human TISB around the phosphorylation site of Ser92 at amino acid range 58-107
Immunogen Region	30-110
Specificity	Phospho-ZFP36L1-Ser92 polyclonal antibody (Mrna Decay Activator Protein Zfp36l1) binds to endogenous Mrna Decay Activator Protein Zfp36l1 at the amino acid region 30-110 only when phosphorylated at Ser92.
Immunogen Sequence	



Western blot analysis of lysates from HepG2 cells, using TISB (Phospho-Ser92) Antibody. The lane on the right is blocked with the phospho peptide.