

Anti-Phospho-TERT-Ser824 antibody (770-850) (STJ90548)

STJ90548

GENERAL INFORMATION

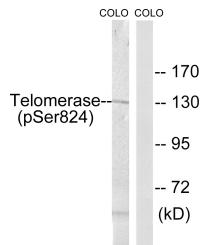
Product Type	Primary antibodies
Short Description	Rabbit polyclonal antibody anti-Phospho-Telomerase Reverse Transcriptase-Ser824 (770-850) is suitable for use in Western Blot, Immunohistochemistry, Immunofluorescence and ELISA research applications.
Applications	WB, IHC-P, IF-P, ELISA
Host/Source	Rabbit
Reactivity	Human, Rat, Mouse

PRODUCT PROPERTIES

Clonality	Polyclonal
Clone ID	
Concentration	1 mg/mL
Conjugation	Unconjugated
Purification	The antibody was affinity-purified from rabbit anti-serum by affinity-chromatography.
Dilution Range	WB 1:500-1:2000 IHC 1:100-1:300 ELISA 1:10000
Formulation	PBS, 50% Glycerol, 0.5% BSA and 0.02% Sodium Azide.
Isotype	IgG
Storage Instruction	Store at 20°C for up to 1 year from the date of receipt, and avoid repeat freeze-thaw cycles.

TARGET INFORMATION

Gene ID	7015
Gene Symbol	TERT
Uniprot ID	TERT_HUMAN
Immunogen	The antiserum was produced against synthesized peptide derived from human Telomerase around the phosphorylation site of Ser824 at amino acid range 796-845
Immunogen Region	770-850
Specificity	Phospho-TERT-Ser824 polyclonal antibody (Telomerase Reverse Transcriptase) binds to endogenous Telomerase Reverse Transcriptase at the amino acid region 770-850 only when phosphorylated at Ser824.
Immunogen Sequence	



Western blot analysis of lysates from COLO205 cells, using Telomerase (Phospho-Ser824) Antibody. The lane on the right is blocked with the phospho peptide.