

Anti-Phospho-MTOR-Thr2446 antibody (2390-2470) (STJ90544)

STJ90544

GENERAL INFORMATION

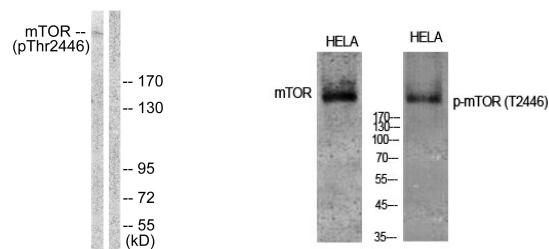
Product Type	Primary antibodies
Short Description	Rabbit polyclonal antibody anti-Phospho-Serine/Threonine-Protein Kinase Mtor-Thr2446 (2390-2470) is suitable for use in Western Blot and ELISA research applications.
Applications	WB, ELISA
Host/Source	Rabbit
Reactivity	Human, Mouse, Rat

PRODUCT PROPERTIES

Clonality	Polyclonal
Clone ID	
Concentration	1 mg/mL
Conjugation	Unconjugated
Purification	The antibody was affinity-purified from rabbit anti-serum by affinity-chromatography.
Dilution	WB 1:500-1:2000
Range	ELISA 1:10000
Formulation	PBS, 50% Glycerol, 0.5% BSA and 0.02% Sodium Azide.
Isotype	IgG
Storage Instruction	Store at -20°C for up to 1 year from the date of receipt, and avoid repeat freeze-thaw cycles.

TARGET INFORMATION

Gene ID	2475
Gene Symbol	MTOR
Uniprot ID	MTOR_HUMAN
Immunogen	The antiserum was produced against synthesized peptide derived from human mTOR around the phosphorylation site of Thr2446 at amino acid range 2412-2461
Immunogen Region	2390-2470
Specificity	Phospho-MTOR-Thr2446 polyclonal antibody (Serine/Threonine-Protein Kinase Mtor) binds to endogenous Serine/Threonine-Protein Kinase Mtor at the amino acid region 2390-2470 only when phosphorylated at Thr2446.
Immunogen Sequence	



Western blot analysis of lysates from NIH/3T3 cells treated with Insulin 0.01 U/ml 15', using mTOR (Phospho-Thr2446) Antibody. The lane on the right is blocked with the phospho peptide.

Western blot analysis of various cells using Phospho-mTOR (T2446) Polyclonal Antibody diluted at 1:1000