

## Anti-Phospho-CDK5-Tyr15 antibody (1-80) (STJ90540)

STJ90540

### GENERAL INFORMATION

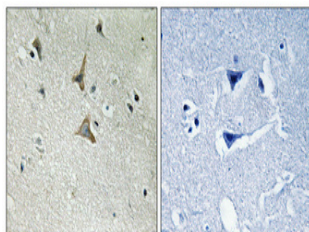
<b>Product Type</b>	Primary antibodies
<b>Short Description</b>	Rabbit polyclonal antibody anti-Phospho-Cyclin-Dependent-Like Kinase 5-Tyr15 (1-80) is suitable for use in Western Blot, Immunohistochemistry, Immunofluorescence and ELISA research applications.
<b>Applications</b>	WB, IHC-P, IF-P, ELISA
<b>Host/Source</b>	Rabbit
<b>Reactivity</b>	Human, Mouse, Rat, Monkey

### PRODUCT PROPERTIES

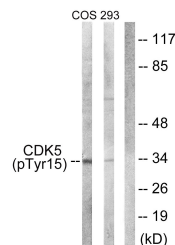
<b>Clonality</b>	Polyclonal
<b>Clone ID</b>	
<b>Concentration</b>	1 mg/mL
<b>Conjugation</b>	Unconjugated
<b>Purification</b>	The antibody was affinity-purified from rabbit anti-serum by affinity-chromatography.
<b>Dilution</b>	WB 1:500-1:2000
<b>Range</b>	IHC 1:100-1:300 ELISA 1:5000
<b>Formulation</b>	PBS, 50% Glycerol, 0.5% BSA and 0.02% Sodium Azide.
<b>Isotype</b>	IgG
<b>Storage Instruction</b>	Store at -20°C for up to 1 year from the date of receipt, and avoid repeat freeze-thaw cycles.

### TARGET INFORMATION

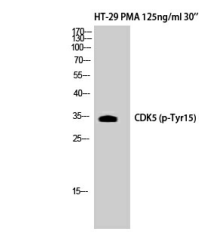
<b>Gene ID</b>	1020
<b>Gene Symbol</b>	CDK5
<b>Uniprot ID</b>	CDK5_HUMAN
<b>Immunogen</b>	The antiserum was produced against synthesized peptide derived from human CDK5 around the phosphorylation site of Tyr15 at amino acid range 1-50
<b>Immunogen Region</b>	1-80
<b>Specificity</b>	Phospho-CDK5-Tyr15 polyclonal antibody (Cyclin-Dependent-Like Kinase 5) binds to endogenous Cyclin-Dependent-Like Kinase 5 at the amino acid region 1-80 only when phosphorylated at Tyr15.
<b>Immunogen Sequence</b>	



Immunohistochemical analysis of paraffin-embedded Human brain. Antibody was diluted at 1:100 (4°C overnight). High-pressure and temperature Tris-EDTA, pH8.0 was used for antigen retrieval. Negative control (right) obtained from antibody was pre-absorbed by immunogen peptide.



Western blot analysis of lysates from COS7 cells treated with EGF 200ng/ml 30' and 293 cells treated with H2O2 100u, 15mins, using CDK5 (Phospho-Tyr15) Antibody. The lane on the right is blocked with the phospho peptide.



Western blot analysis of HT29+PMA cells using Phospho-Cdk5 (Y15) Polyclonal Antibody