

Anti-Phospho-LEF1-Ser42 antibody (20-100) (STJ90534)

STJ90534

GENERAL INFORMATION

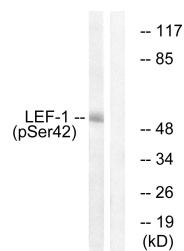
Product Type	Primary antibodies
Short Description	Rabbit polyclonal antibody anti-Phospho-Lymphoid Enhancer-Binding Factor 1-Ser42 (20-100) is suitable for use in Western Blot, Immunofluorescence, Immunocytochemistry and ELISA research applications.
Applications	WB, IF, ICC, ELISA
Host/Source	Rabbit
Reactivity	Human, Mouse, Rat

PRODUCT PROPERTIES

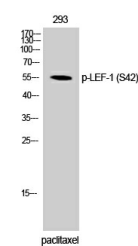
Clonality	Polyclonal
Clone ID	
Concentration	1 mg/mL
Conjugation	Unconjugated
Purification	The antibody was affinity-purified from rabbit anti-serum by affinity-chromatography.
Dilution	WB 1:500-1:2000
Range	ELISA 1:5000
Formulation	PBS, 50% Glycerol, 0.5% BSA and 0.02% Sodium Azide.
Isotype	IgG
Storage	Store at -20°C for up to 1 year from the date of receipt, and avoid repeat freeze-thaw cycles.
Instruction	

TARGET INFORMATION

Gene ID	51176
Gene Symbol	LEF1
Uniprot ID	LEF1_HUMAN
Immunogen	The antiserum was produced against synthesized peptide derived from human LEF-1 around the phosphorylation site of Ser42 at amino acid range 8-57
Immunogen Region	20-100
Specificity	Phospho-LEF1-Ser42 polyclonal antibody (Lymphoid Enhancer-Binding Factor 1) binds to endogenous Lymphoid Enhancer-Binding Factor 1 at the amino acid region 20-100 only when phosphorylated at Ser42.
Immunogen Sequence	



Western blot analysis of lysates from 293 cells treated with paclitaxel 1µM 24h, using LEF-1 (Phospho-Ser42) Antibody. The lane on the right is blocked with the phospho peptide.



Western blot analysis of 293 cells using Phospho-LEF-1 (S42) Polyclonal Antibody

This product is suitable for in-vitro studies under the RESEARCH USE ONLY [RUO] licence. This product must not be used as for diagnostic or other medical purposes.
 St John's Laboratory Ltd, Knowledge Dock Business Centre, University Way, London, E16 2RD | Tel: 0208 223 3081