

Anti-Phospho-KIF20A-Ser528 antibody (470-550) (STJ90533)

STJ90533

GENERAL INFORMATION

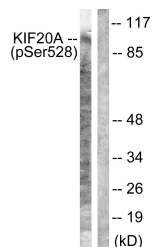
Product Type	Primary antibodies
Short Description	Rabbit polyclonal antibody anti-Phospho-Kinesin-Like Protein Kif20a-Ser528 (470-550) is suitable for use in Western Blot, Immunohistochemistry, Immunofluorescence and ELISA research applications.
Applications	WB, IHC-P, IF-P, ELISA
Host/Source	Rabbit
Reactivity	Human, Rat, Mouse

PRODUCT PROPERTIES

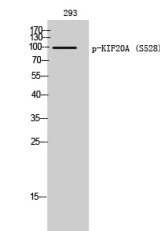
Clonality	Polyclonal
Clone ID	
Concentration	1 mg/mL
Conjugation	Unconjugated
Purification	The antibody was affinity-purified from rabbit anti-serum by affinity-chromatography.
Dilution Range	WB 1:500-1:2000 IHC 1:100-1:300 ELISA 1:5000
Formulation	PBS, 50% Glycerol, 0.5% BSA and 0.02% Sodium Azide.
Isotype	IgG
Storage Instruction	Store at -20°C for up to 1 year from the date of receipt, and avoid repeat freeze-thaw cycles.

TARGET INFORMATION

Gene ID	10112
Gene Symbol	KIF20A
Uniprot ID	K120A_HUMAN
Immunogen	The antiserum was produced against synthesized peptide derived from human KIF20A around the phosphorylation site of Ser528 at amino acid range 501-550
Immunogen Region	470-550
Specificity	Phospho-KIF20A-Ser528 polyclonal antibody (Kinesin-Like Protein Kif20a) binds to endogenous Kinesin-Like Protein Kif20a at the amino acid region 470-550 only when phosphorylated at Ser528.
Immunogen Sequence	



Western blot analysis of lysates from 293 cells, using KIF20A (Phospho-Ser528) Antibody. The lane on the right is blocked with the phospho peptide.



Western blot analysis of 293 cells using Phospho-KIF20A (S528) Polyclonal Antibody

This product is suitable for in-vitro studies under the RESEARCH USE ONLY [RUO] licence. This product must not be used as for diagnostic or other medical purposes.
St John's Laboratory Ltd, Knowledge Dock Business Centre, University Way, London, E16 2RD | Tel: 0208 223 3081