

Anti-Phospho-IL2RB-Tyr364 antibody (300-380) (STJ90530)

STJ90530

GENERAL INFORMATION

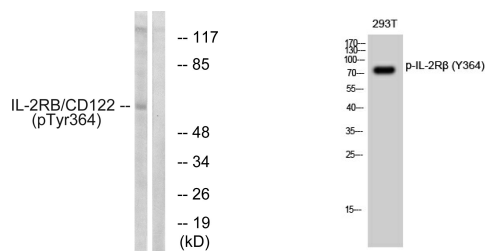
Product Type	Primary antibodies
Short Description	Rabbit polyclonal antibody anti-Phospho-Interleukin-2 Receptor Subunit Beta-Tyr364 (300-380) is suitable for use in Western Blot and ELISA research applications.
Applications	WB, ELISA
Host/Source	Rabbit
Reactivity	Human, Mouse, Rat, Monkey

PRODUCT PROPERTIES

Clonality	Polyclonal
Clone ID	
Concentration	1 mg/mL
Conjugation	Unconjugated
Purification	The antibody was affinity-purified from rabbit anti-serum by affinity-chromatography.
Dilution	WB 1:500-1:2000
Range	ELISA 1:10000
Formulation	PBS, 50% Glycerol, 0.5% BSA and 0.02% Sodium Azide.
Isotype	IgG
Storage	Store at -20°C for up to 1 year from the date of receipt, and avoid repeat freeze-thaw cycles.
Instruction	

TARGET INFORMATION

Gene ID	3560
Gene Symbol	IL2RB
Uniprot ID	IL2RB_HUMAN
Immunogen	The antiserum was produced against synthesized peptide derived from human IL-2R beta/CD122 around the phosphorylation site of Tyr364 at amino acid range 331-380
Immunogen Region	300-380
Specificity	Phospho-IL2RB-Tyr364 polyclonal antibody (Interleukin-2 Receptor Subunit Beta) binds to endogenous Interleukin-2 Receptor Subunit Beta at the amino acid region 300-380 only when phosphorylated at Tyr364.
Immunogen Sequence	



Western blot analysis of lysates from COS7 cells, using IL-2R beta/CD122 (Phospho-Tyr364) Antibody. The lane on the right is blocked with the phospho peptide.

Western blot analysis of 293T cells using Phospho-IL-2R Beta (Y364) Polyclonal Antibody diluted at 1: 500

This product is suitable for in-vitro studies under the RESEARCH USE ONLY [RUO] licence. This product must not be used as for diagnostic or other medical purposes.
 St John's Laboratory Ltd, Knowledge Dock Business Centre, University Way, London, E16 2RD | Tel: 0208 223 3081