

Anti-Phospho-IL10RA-Tyr496 antibody (440-520) (STJ90528)

STJ90528

GENERAL INFORMATION

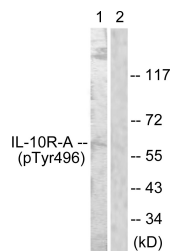
Product Type	Primary antibodies
Short Description	Rabbit polyclonal antibody anti-Phospho-Interleukin-10 Receptor Subunit Alpha-Tyr496 (440-520) is suitable for use in Western Blot and ELISA research applications.
Applications	WB, ELISA
Host/Source	Rabbit
Reactivity	Human, Rat, Mouse

PRODUCT PROPERTIES

Clonality	Polyclonal
Clone ID	
Concentration	1 mg/mL
Conjugation	Unconjugated
Purification	The antibody was affinity-purified from rabbit anti-serum by affinity-chromatography.
Dilution	WB 1:500-1:2000
Range	ELISA 1:20000
Formulation	PBS, 50% Glycerol, 0.5% BSA and 0.02% Sodium Azide.
Isotype	IgG
Storage	Store at -20°C for up to 1 year from the date of receipt, and avoid repeat freeze-thaw cycles.
Instruction	

TARGET INFORMATION

Gene ID	3587
Gene Symbol	IL10RA
Uniprot ID	I10R1_HUMAN
Immunogen	The antiserum was produced against synthesized peptide derived from human IL-10R alpha around the phosphorylation site of Tyr496 at amino acid range 462-511
Immunogen Region	440-520
Specificity	Phospho-IL10RA-Tyr496 polyclonal antibody (Interleukin-10 Receptor Subunit Alpha) binds to endogenous Interleukin-10 Receptor Subunit Alpha at the amino acid region 440-520 only when phosphorylated at Tyr496.
Immunogen Sequence	



This product is suitable for in-vitro studies under the RESEARCH USE ONLY [RUO] licence. This product must not be used as for diagnostic or other medical purposes.
 St John's Laboratory Ltd, Knowledge Dock Business Centre, University Way, London, E16 2RD | Tel: 0208 223 3081