

## Anti-Phospho-CDK9-Thr186 antibody (130-210) (STJ90525)

STJ90525

### GENERAL INFORMATION

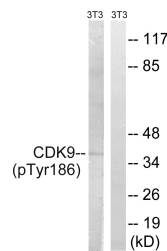
<b>Product Type</b>	Primary antibodies
<b>Short Description</b>	Rabbit polyclonal antibody anti-Phospho-Cyclin-Dependent Kinase 9-Thr186 (130-210) is suitable for use in Western Blot and ELISA research applications.
<b>Applications</b>	WB, ELISA
<b>Host/Source</b>	Rabbit
<b>Reactivity</b>	Human, Mouse, Rat

### PRODUCT PROPERTIES

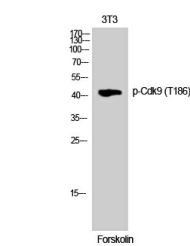
<b>Clonality</b>	Polyclonal
<b>Clone ID</b>	
<b>Concentration</b>	1 mg/mL
<b>Conjugation</b>	Unconjugated
<b>Purification</b>	The antibody was affinity-purified from rabbit anti-serum by affinity-chromatography.
<b>Dilution Range</b>	WB 1:500-1:2000 ELISA 1:5000
<b>Formulation</b>	PBS, 50% Glycerol, 0.5% BSA and 0.02% Sodium Azide.
<b>Isotype</b>	IgG
<b>Storage</b>	Store at -20°C for up to 1 year from the date of receipt, and avoid repeat freeze-thaw cycles.
<b>Instruction</b>	

### TARGET INFORMATION

<b>Gene ID</b>	1025
<b>Gene Symbol</b>	CDK9
<b>Uniprot ID</b>	CDK9_HUMAN
<b>Immunogen</b>	The antiserum was produced against synthesized peptide derived from human CDK9 around the phosphorylation site of Thr186 at amino acid range 152-201
<b>Immunogen Region</b>	130-210
<b>Specificity</b>	Phospho-CDK9-Thr186 polyclonal antibody (Cyclin-Dependent Kinase 9) binds to endogenous Cyclin-Dependent Kinase 9 at the amino acid region 130-210 only when phosphorylated at Thr186.
<b>Immunogen Sequence</b>	



Western blot analysis of lysates from NIH/3T3 cells treated with Forskolin 40nM 30', using CDK9 (Phospho-Thr186) Antibody. The lane on the right is blocked with the phospho peptide.



Western blot analysis of 3T3 cells using Phospho-Cdk9 (T186) Polyclonal Antibody cells nucleus extracted by Minute TM Cytoplasmic and Nuclear Fractionation kit (SC-003, Inventibiotec, MN, USA).