

## Anti-Phospho-Smad2/3-Thr8 antibody (1-80) (STJ90522)

STJ90522

### GENERAL INFORMATION

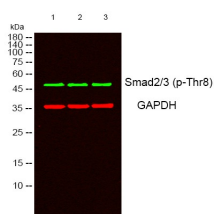
<b>Product Type</b>	Primary antibodies
<b>Short Description</b>	Rabbit polyclonal antibody anti-Phospho-Mothers against decapentaplegic homolog 2 and Mothers against decapentaplegic homolog 3-Thr8 (1-80) is suitable for use in Western Blot and ELISA research applications.
<b>Applications</b>	WB, ELISA
<b>Host/Source</b>	Rabbit
<b>Reactivity</b>	Human, Mouse, Rat

### PRODUCT PROPERTIES

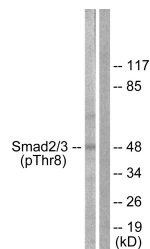
<b>Clonality</b>	Polyclonal
<b>Clone ID</b>	
<b>Concentration</b>	1 mg/mL
<b>Conjugation</b>	Unconjugated
<b>Purification</b>	The antibody was affinity-purified from rabbit anti-serum by affinity-chromatography.
<b>Dilution</b>	WB 1:500-1:2000
<b>Range</b>	ELISA 1:10000
<b>Formulation</b>	PBS, 50% Glycerol, 0.5% BSA and 0.02% Sodium Azide.
<b>Isotype</b>	IgG
<b>Storage</b>	Store at -20°C for up to 1 year from the date of receipt, and avoid repeat freeze-thaw cycles.
<b>Instruction</b>	

### TARGET INFORMATION

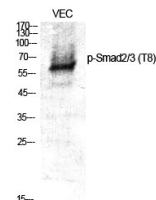
<b>Gene ID</b>	4088 4087
<b>Gene Symbol</b>	SMAD3 SMAD2
<b>Uniprot ID</b>	SMAD3_HUMAN SMAD2_HUMAN
<b>Immunogen</b>	The antiserum was produced against synthesized peptide derived from human Smad2/3 around the phosphorylation site of Thr8 at amino acid range 1-50
<b>Immunogen Region</b>	1-80
<b>Specificity</b>	Phospho-Smad2/3-Thr8 polyclonal antibody (Mothers against decapentaplegic homolog 2 and Mothers against decapentaplegic homolog 3) binds to endogenous Mothers against decapentaplegic homolog 2 and Mothers against decapentaplegic homolog 3 at the amin
<b>Immunogen Sequence</b>	



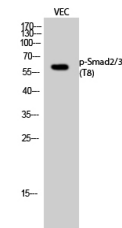
Western blot analysis of lysates from 1) VEC, 2) HeLa, 3) HepG2 cells. (Green) primary antibody was diluted at 1:1000, 4°C over night, secondary antibody (cat: NA) was diluted at 1:10000, 37°C 1hour. (Red) GAPDH monoclonal antibody (2B6) (cat: STJ96931) antibody was diluted at 1:5000 as loading control, 4°C over night, secondary antibody (cat: NA) was diluted at 1:10000, 37°C 1hour.



Western blot analysis of lysates from RAW264.7 cells, using Smad2/3 (Phospho-Thr8) Antibody. The lane on the right is blocked with the phospho peptide.



Western blot analysis of various cells using Phospho-Smad2/3 (T8) Polyclonal Antibody



Western blot analysis of VEC cells using Phospho-Smad2/3 (T8) Polyclonal Antibody

This product is suitable for in-vitro studies under the RESEARCH USE ONLY [RUO] licence. This product must not be used as for diagnostic or other medical purposes.  
St John's Laboratory Ltd, Knowledge Dock Business Centre, University Way, London, E16 2RD | Tel: 0208 223 3081