

Anti-Phospho-EFNB1-Tyr317 antibody (260-340) (STJ90516)

STJ90516

GENERAL INFORMATION

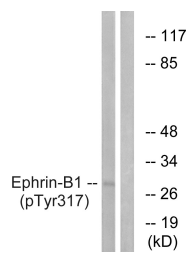
Product Type	Primary antibodies
Short Description	Rabbit polyclonal antibody anti-Phospho-Ephrin-B1-Tyr317 (260-340) is suitable for use in Western Blot and ELISA research applications.
Applications	WB, ELISA
Host/Source	Rabbit
Reactivity	Human, Mouse, Rat

PRODUCT PROPERTIES

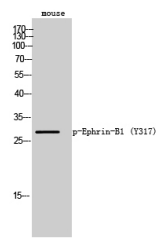
Clonality	Polyclonal
Clone ID	
Concentration	1 mg/mL
Conjugation	Unconjugated
Purification	The antibody was affinity-purified from rabbit anti-serum by affinity-chromatography.
Dilution Range	WB 1:500-1:2000 ELISA 1:20000
Formulation	PBS, 50% Glycerol, 0.5% BSA and 0.02% Sodium Azide.
Isotype	IgG
Storage	Store at -20°C for up to 1 year from the date of receipt, and avoid repeat freeze-thaw cycles.
Instruction	

TARGET INFORMATION

Gene ID	1947
Gene Symbol	EFNB1
Uniprot ID	EFNB1_HUMAN
Immunogen	The antiserum was produced against synthesized peptide derived from human EFNB1 around the phosphorylation site of Tyr317 at amino acid range 283-332
Immunogen Region	260-340
Specificity	Phospho-EFNB1-Tyr317 polyclonal antibody (Ephrin-B1) binds to endogenous Ephrin-B1 at the amino acid region 260-340 only when phosphorylated at Tyr317.
Immunogen Sequence	



Western blot analysis of lysates from mouse brain, using EFNB1 (Phospho-Tyr317) Antibody. The lane on the right is blocked with the phospho peptide.



Western blot analysis of mouse cells using Phospho-Ephrin-B1 (Y317) Polyclonal Antibody

This product is suitable for in-vitro studies under the RESEARCH USE ONLY [RUO] licence. This product must not be used as for diagnostic or other medical purposes.
St John's Laboratory Ltd, Knowledge Dock Business Centre, University Way, London, E16 2RD | Tel: 0208 223 3081