

Anti-Phospho-CDC25A-Ser124 antibody (60-140) (STJ90511)

STJ90511

GENERAL INFORMATION

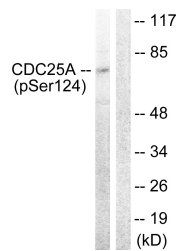
Product Type	Primary antibodies
Short Description	Rabbit polyclonal antibody anti-Phospho-M-Phase Inducer Phosphatase 1-Ser124 (60-140) is suitable for use in Western Blot and ELISA research applications.
Applications	WB, ELISA
Host/Source	Rabbit
Reactivity	Human, Mouse, Rat

PRODUCT PROPERTIES

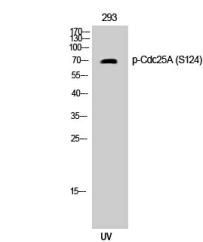
Clonality	Polyclonal
Clone ID	
Concentration	1 mg/mL
Conjugation	Unconjugated
Purification	The antibody was affinity-purified from rabbit anti-serum by affinity-chromatography.
Dilution	WB 1:500-1:2000
Range	ELISA 1:5000
Formulation	PBS, 50% Glycerol, 0.5% BSA and 0.02% Sodium Azide.
Isotype	IgG
Storage Instruction	Store at -20°C for up to 1 year from the date of receipt, and avoid repeat freeze-thaw cycles.

TARGET INFORMATION

Gene ID	993
Gene Symbol	CDC25A
Uniprot ID	MPIP1_HUMAN
Immunogen	The antiserum was produced against synthesized peptide derived from human CDC25A around the phosphorylation site of Ser124 at amino acid range 90-139
Immunogen Region	60-140
Specificity	Phospho-CDC25A-Ser124 polyclonal antibody (M-Phase Inducer Phosphatase 1) binds to endogenous M-Phase Inducer Phosphatase 1 at the amino acid region 60-140 only when phosphorylated at Ser124.
Immunogen Sequence	



Western blot analysis of lysates from 293 cells treated with UV 15' using CDC25A (Phospho-Ser124) Antibody. The lane on the right is blocked with the phospho peptide.



Western blot analysis of 293 cells using Phospho-Cdc25A (S124) Polyclonal Antibody

This product is suitable for in-vitro studies under the RESEARCH USE ONLY [RUO] licence. This product must not be used as for diagnostic or other medical purposes.
 St John's Laboratory Ltd, Knowledge Dock Business Centre, University Way, London, E16 2RD | Tel: 0208 223 3081