

Anti-Phospho-ICAM3-Ser518 antibody (460-540) (STJ90510)

STJ90510

GENERAL INFORMATION

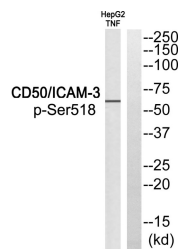
Product Type	Primary antibodies
Short Description	Rabbit polyclonal antibody anti-Phospho-Intercellular Adhesion Molecule 3-Ser518 (460-540) is suitable for use in Western Blot and ELISA research applications.
Applications	WB, ELISA
Host/Source	Rabbit
Reactivity	Human, Rat, Mouse

PRODUCT PROPERTIES

Clonality	Polyclonal
Clone ID	
Concentration	1 mg/mL
Conjugation	Unconjugated
Purification	The antibody was affinity-purified from rabbit anti-serum by affinity-chromatography.
Dilution	WB 1:500-1:2000
Range	ELISA 1:40000
Formulation	PBS, 50% Glycerol, 0.5% BSA and 0.02% Sodium Azide.
Isotype	IgG
Storage	Store at -20°C for up to 1 year from the date of receipt, and avoid repeat freeze-thaw cycles.
Instruction	

TARGET INFORMATION

Gene ID	3385
Gene Symbol	ICAM3
Uniprot ID	ICAM3_HUMAN
Immunogen	The antiserum was produced against synthesized peptide derived from human CD50/ICAM-3 around the phosphorylation site of Ser518 at amino acid range 484-533
Immunogen Region	460-540
Specificity	Phospho-ICAM3-Ser518 polyclonal antibody (Intercellular Adhesion Molecule 3) binds to endogenous Intercellular Adhesion Molecule 3 at the amino acid region 460-540 only when phosphorylated at Ser518.
Immunogen Sequence	



Western blot analysis of CD50/ICAM-3 (Phospho-Ser518) Antibody. The lane on the right is blocked with the CD50/ICAM-3 (Phospho-Ser518) peptide.

This product is suitable for in-vitro studies under the RESEARCH USE ONLY [RUO] licence. This product must not be used as for diagnostic or other medical purposes.
 St John's Laboratory Ltd, Knowledge Dock Business Centre, University Way, London, E16 2RD | Tel: 0208 223 3081