

Anti-Phospho-CD44-Ser706 antibody (650-730) (STJ90509)

STJ90509

GENERAL INFORMATION

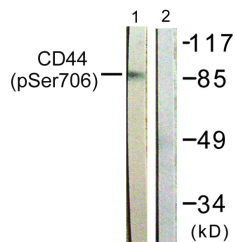
Product Type	Primary antibodies
Short Description	Rabbit polyclonal antibody anti-Phospho-Cd44 antigen-Ser706 (650-730) is suitable for use in Western Blot and ELISA research applications.
Applications	WB, ELISA
Host/Source	Rabbit
Reactivity	Human, Mouse, Rat

PRODUCT PROPERTIES

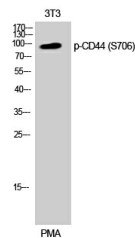
Clonality	Polyclonal
Clone ID	
Concentration	1 mg/mL
Conjugation	Unconjugated
Purification	The antibody was affinity-purified from rabbit anti-serum by affinity-chromatography.
Dilution Range	WB 1:500-1:2000 ELISA 1:20000
Formulation	PBS, 50% Glycerol, 0.5% BSA and 0.02% Sodium Azide.
Isotype	IgG
Storage Instruction	Store at -20°C for up to 1 year from the date of receipt, and avoid repeat freeze-thaw cycles.

TARGET INFORMATION

Gene ID	960
Gene Symbol	CD44
Uniprot ID	CD44_HUMAN
Immunogen	The antiserum was produced against synthesized peptide derived from human CD44 around the phosphorylation site of Ser706 at amino acid range 681-730
Immunogen Region	650-730
Specificity	Phospho-CD44-Ser706 polyclonal antibody (Cd44 Antigen) binds to endogenous Cd44 Antigen at the amino acid region 650-730 only when phosphorylated at Ser706.
Immunogen Sequence	



Western blot analysis of lysates from NIH/3T3 cells treated with PMA 250ng/ml 5', using CD44 (Phospho-Ser706) Antibody. The lane on the right is blocked with the phospho peptide.



Western blot analysis of 3T3 cells using Phospho-CD44 (S706) Polyclonal Antibody

This product is suitable for in-vitro studies under the RESEARCH USE ONLY [RUO] licence. This product must not be used as for diagnostic or other medical purposes.
St John's Laboratory Ltd, Knowledge Dock Business Centre, University Way, London, E16 2RD | Tel: 0208 223 3081