

Anti-Phospho-CD28-Tyr218 antibody (140-220) (STJ90508)

STJ90508

GENERAL INFORMATION

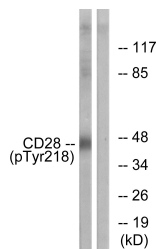
Product Type	Primary antibodies
Short Description	Rabbit polyclonal antibody anti-Phospho-T-Cell-Specific Surface Glycoprotein Cd28-Tyr218 (140-220) is suitable for use in Western Blot and ELISA research applications.
Applications	WB, ELISA
Host/Source	Rabbit
Reactivity	Human, Mouse

PRODUCT PROPERTIES

Clonality	Polyclonal
Clone ID	
Concentration	1 mg/mL
Conjugation	Unconjugated
Purification	The antibody was affinity-purified from rabbit anti-serum by affinity-chromatography.
Dilution	WB 1:500-1:2000
Range	ELISA 1:40000
Formulation	PBS, 50% Glycerol, 0.5% BSA and 0.02% Sodium Azide.
Isotype	IgG
Storage Instruction	Store at-20°C for up to 1 year from the date of receipt, and avoid repeat freeze-thaw cycles.

TARGET INFORMATION

Gene ID	940
Gene Symbol	CD28
Uniprot ID	CD28_HUMAN
Immunogen	The antiserum was produced against synthesized peptide derived from human CD28 around the phosphorylation site of Tyr218 at amino acid range 171-220
Immunogen Region	140-220
Specificity	Phospho-CD28-Tyr218 polyclonal antibody (T-Cell-Specific Surface Glycoprotein Cd28) binds to endogenous T-Cell-Specific Surface Glycoprotein Cd28 at the amino acid region 140-220 only when phosphorylated at Tyr218.
Immunogen Sequence	



This product is suitable for in-vitro studies under the RESEARCH USE ONLY [RUO] licence. This product must not be used as for diagnostic or other medical purposes.
 St John's Laboratory Ltd, Knowledge Dock Business Centre, University Way, London, E16 2RD | Tel: 0208 223 3081