

## Anti-Phospho-MST1R-Ser1394 antibody (1330-1410) (STJ90506)

STJ90506

### GENERAL INFORMATION

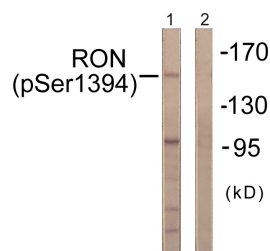
<b>Product Type</b>	Primary antibodies
<b>Short Description</b>	Rabbit polyclonal antibody anti-Phospho-Macrophage-Stimulating Protein Receptor-Ser1394 (1330-1410) is suitable for use in Western Blot and ELISA research applications.
<b>Applications</b>	WB, ELISA
<b>Host/Source</b>	Rabbit
<b>Reactivity</b>	Human, Mouse

### PRODUCT PROPERTIES

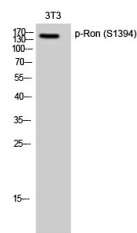
<b>Clonality</b>	Polyclonal
<b>Clone ID</b>	
<b>Concentration</b>	1 mg/mL
<b>Conjugation</b>	Unconjugated
<b>Purification</b>	The antibody was affinity-purified from rabbit anti-serum by affinity-chromatography.
<b>Dilution</b>	WB 1:500-1:2000
<b>Range</b>	ELISA 1:40000
<b>Formulation</b>	PBS, 50% Glycerol, 0.5% BSA and 0.02% Sodium Azide.
<b>Isotype</b>	IgG
<b>Storage</b>	Store at -20°C for up to 1 year from the date of receipt, and avoid repeat freeze-thaw cycles.
<b>Instruction</b>	

### TARGET INFORMATION

<b>Gene ID</b>	4486
<b>Gene Symbol</b>	MST1R
<b>Uniprot ID</b>	RON_HUMAN
<b>Immunogen</b>	The antiserum was produced against synthesized peptide derived from human CD136/RON around the phosphorylation site of Ser1394 at amino acid range 1351-1400
<b>Immunogen Region</b>	1330-1410
<b>Specificity</b>	Phospho-MST1R-Ser1394 polyclonal antibody (Macrophage-Stimulating Protein Receptor) binds to endogenous Macrophage-Stimulating Protein Receptor at the amino acid region 1330-1410 only when phosphorylated at Ser1394.
<b>Immunogen Sequence</b>	



Western blot analysis of lysates from HeLa cells treated with TNF- $\alpha$  20ng/ml 2', using CD136/RON (Phospho-Ser1394) Antibody. The lane on the right is blocked with the phospho peptide.



Western blot analysis of 3T3 cells using Phospho-RON (S1394) Polyclonal Antibody diluted at 1: 500

This product is suitable for in-vitro studies under the RESEARCH USE ONLY [RUO] licence. This product must not be used as for diagnostic or other medical purposes.  
 St John's Laboratory Ltd, Knowledge Dock Business Centre, University Way, London, E16 2RD | Tel: 0208 223 3081