

Anti-Phospho-KAT5-Ser86 antibody (30-110) (STJ90502)

STJ90502

GENERAL INFORMATION

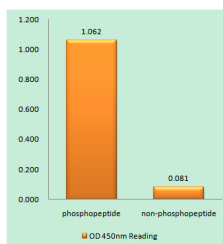
Product Type	Primary antibodies
Short Description	Rabbit polyclonal antibody anti-Phospho-Histone Acetyltransferase Kat5-Ser86 (30-110) is suitable for use in Western Blot and ELISA research applications.
Applications	WB, ELISA
Host/Source	Rabbit
Reactivity	Human, Mouse

PRODUCT PROPERTIES

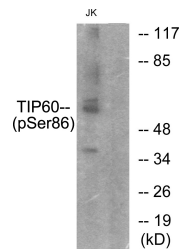
Clonality	Polyclonal
Clone ID	
Concentration	1 mg/mL
Conjugation	Unconjugated
Purification	The antibody was affinity-purified from rabbit anti-serum by affinity-chromatography.
Dilution	WB 1:500-1:2000
Range	ELISA 1:40000
Formulation	PBS, 50% Glycerol, 0.5% BSA and 0.02% Sodium Azide.
Isotype	IgG
Storage	Store at -20°C for up to 1 year from the date of receipt, and avoid repeat freeze-thaw cycles.
Instruction	

TARGET INFORMATION

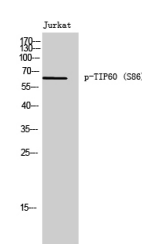
Gene ID	10524
Gene Symbol	KAT5
Uniprot ID	KAT5_HUMAN
Immunogen	The antiserum was produced against synthesized peptide derived from human TIP60 around the phosphorylation site of Ser86 at amino acid range 52-101
Immunogen Region	30-110
Specificity	Phospho-KAT5-Ser86 polyclonal antibody (Histone Acetyltransferase Kat5) binds to endogenous Histone Acetyltransferase Kat5 at the amino acid region 30-110 only when phosphorylated at Ser86.
Immunogen Sequence	



Enzyme-Linked Immunosorbent Assay (Phospho-ELISA) for Immunogen Phosphopeptide (Phospho-left) and Non-Phosphopeptide (Phospho-right), using TIP60 (Phospho-Ser86) Antibody



Western blot analysis of lysates from Jurkat cells, using TIP60 (Phospho-Ser86) Antibody. The lane on the right is blocked with the phospho peptide.



Western blot analysis of Jurkat cells using Phospho-TIP60 (S86) Polyclonal Antibody