

## Anti-Phospho-PRKCA-Tyr657 antibody (600-680) (STJ90499)

STJ90499

### GENERAL INFORMATION

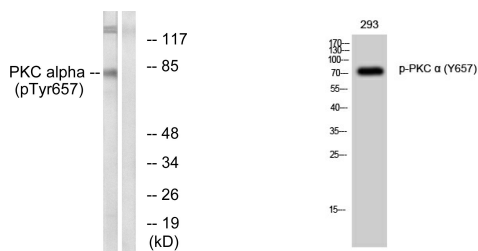
<b>Product Type</b>	Primary antibodies
<b>Short Description</b>	Rabbit polyclonal antibody anti-Phospho-Protein Kinase C Alpha Type-Tyr657 (600-680) is suitable for use in Western Blot and ELISA research applications.
<b>Applications</b>	WB, ELISA
<b>Host/Source</b>	Rabbit
<b>Reactivity</b>	Human, Mouse, Rat

### PRODUCT PROPERTIES

<b>Clonality</b>	Polyclonal
<b>Clone ID</b>	
<b>Concentration</b>	1 mg/mL
<b>Conjugation</b>	Unconjugated
<b>Purification</b>	The antibody was affinity-purified from rabbit anti-serum by affinity-chromatography.
<b>Dilution</b>	WB 1:500-1:2000
<b>Range</b>	ELISA 1:10000
<b>Formulation</b>	PBS, 50% Glycerol, 0.5% BSA and 0.02% Sodium Azide.
<b>Isotype</b>	IgG
<b>Storage</b>	Store at -20°C for up to 1 year from the date of receipt, and avoid repeat freeze-thaw cycles.
<b>Instruction</b>	

### TARGET INFORMATION

<b>Gene ID</b>	5578
<b>Gene Symbol</b>	PRKCA
<b>Uniprot ID</b>	KPCA_HUMAN
<b>Immunogen</b>	The antiserum was produced against synthesized peptide derived from human PKC alpha around the phosphorylation site of Tyr657 at amino acid range 623-672
<b>Immunogen Region</b>	600-680
<b>Specificity</b>	Phospho-PRKCA-Tyr657 polyclonal antibody (Protein Kinase C Alpha Type) binds to endogenous Protein Kinase C Alpha Type at the amino acid region 600-680 only when phosphorylated at Tyr657.
<b>Immunogen Sequence</b>	



Western blot analysis of lysates from COL0205 cells, using PKC alpha (Phospho-Tyr657) Antibody. The lane on the right is blocked with the phospho peptide.

Western blot analysis of 293 cells using Phospho-PKC Alpha (Y657) Polyclonal Antibody diluted at 1: 1000

This product is suitable for in-vitro studies under the RESEARCH USE ONLY [RUO] licence. This product must not be used as for diagnostic or other medical purposes.  
 St John's Laboratory Ltd, Knowledge Dock Business Centre, University Way, London, E16 2RD | Tel: 0208 223 3081