

## Anti-Phospho-ADAM17-Thr735 antibody (670-750) (STJ90495)

STJ90495

### GENERAL INFORMATION

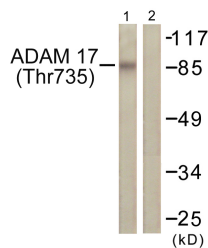
<b>Product Type</b>	Primary antibodies
<b>Short Description</b>	Rabbit polyclonal antibody anti-Phospho-Disintegrin And Metalloproteinase Domain-Containing Protein 17-Thr735 (670-750) is suitable for use in Western Blot, Immunohistochemistry, Immunofluorescence and ELISA research applications.
<b>Applications</b>	WB, IHC-P, IF-P, ELISA
<b>Host/Source</b>	Rabbit
<b>Reactivity</b>	Human, Mouse, Rat

### PRODUCT PROPERTIES

<b>Clonality</b>	Polyclonal
<b>Clone ID</b>	
<b>Concentration</b>	1 mg/mL
<b>Conjugation</b>	Unconjugated
<b>Purification</b>	The antibody was affinity-purified from rabbit anti-serum by affinity-chromatography.
<b>Dilution</b>	WB 1:500-1:2000
<b>Range</b>	IHC 1:100-1:300 ELISA 1:20000
<b>Formulation</b>	PBS, 50% Glycerol, 0.5% BSA and 0.02% Sodium Azide.
<b>Isotype</b>	IgG
<b>Storage Instruction</b>	Store at -20°C for up to 1 year from the date of receipt, and avoid repeat freeze-thaw cycles.

### TARGET INFORMATION

<b>Gene ID</b>	6868
<b>Gene Symbol</b>	ADAM17
<b>Uniprot ID</b>	ADA17_HUMAN
<b>Immunogen</b>	The antiserum was produced against synthesized peptide derived from human ADAM 17 around the phosphorylation site of Thr735 at amino acid range 701-750
<b>Immunogen Region</b>	670-750
<b>Specificity</b>	Phospho-ADAM17-Thr735 polyclonal antibody (Disintegrin And Metalloproteinase Domain-Containing Protein 17) binds to endogenous Disintegrin And Metalloproteinase Domain-Containing Protein 17 at the amino acid region 670-750 only when phosphorylated at
<b>Immunogen Sequence</b>	



Western blot analysis of lysates from K562 cells treated with UV 5' using ADAM 17 (Phospho-Thr735) Antibody. The lane on the right is blocked with the phospho peptide.