

Anti-Phospho-SGK1-Ser78 antibody (10-90) (STJ90493)

STJ90493

GENERAL INFORMATION

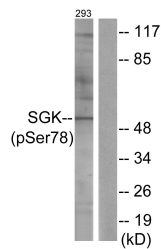
Product Type	Primary antibodies
Short Description	Rabbit polyclonal antibody anti-Phospho-Serine/Threonine-Protein Kinase Sgk1-Ser78 (10-90) is suitable for use in Western Blot and ELISA research applications.
Applications	WB, ELISA
Host/Source	Rabbit
Reactivity	Human, Mouse, Rat

PRODUCT PROPERTIES

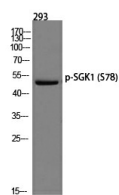
Clonality	Polyclonal
Clone ID	
Concentration	1 mg/mL
Conjugation	Unconjugated
Purification	The antibody was affinity-purified from rabbit anti-serum by affinity-chromatography.
Dilution	WB 1:500-1:2000
Range	ELISA 1:10000
Formulation	PBS, 50% Glycerol, 0.5% BSA and 0.02% Sodium Azide.
Isotype	IgG
Storage	Store at -20°C for up to 1 year from the date of receipt, and avoid repeat freeze-thaw cycles.
Instruction	

TARGET INFORMATION

Gene ID	6446
Gene Symbol	SGK1
Uniprot ID	SGK1_HUMAN
Immunogen	The antiserum was produced against synthesized peptide derived from human SGK around the phosphorylation site of Ser78 at amino acid range 41-90
Immunogen Region	10-90
Specificity	Phospho-SGK1-Ser78 polyclonal antibody (Serine/Threonine-Protein Kinase Sgk1) binds to endogenous Serine/Threonine-Protein Kinase Sgk1 at the amino acid region 10-90 only when phosphorylated at Ser78.
Immunogen Sequence	



Western blot analysis of lysates from 293 cells treated with UV 15', using SGK (Phospho-Ser78) Antibody. The lane on the right is blocked with the phospho peptide.



Western blot analysis of 293 cells using p-SGK1 (S78) antibody. Antibody was diluted at 1:2000

This product is suitable for in-vitro studies under the RESEARCH USE ONLY [RUO] licence. This product must not be used as for diagnostic or other medical purposes.
 St John's Laboratory Ltd, Knowledge Dock Business Centre, University Way, London, E16 2RD | Tel: 0208 223 3081