

Anti-Phospho-PIM1-Tyr309 antibody (250-330) (STJ90491)

STJ90491

GENERAL INFORMATION

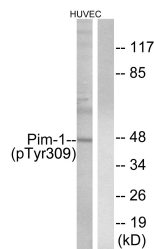
Product Type	Primary antibodies
Short Description	Rabbit polyclonal antibody anti-Phospho-Serine/Threonine-Protein Kinase Pim-1-Tyr309 (250-330) is suitable for use in Western Blot and ELISA research applications.
Applications	WB, ELISA
Host/Source	Rabbit
Reactivity	Human, Mouse, Rat

PRODUCT PROPERTIES

Clonality	Polyclonal
Clone ID	
Concentration	1 mg/mL
Conjugation	Unconjugated
Purification	The antibody was affinity-purified from rabbit anti-serum by affinity-chromatography.
Dilution	WB 1:500-1:2000
Range	ELISA 1:40000
Formulation	PBS, 50% Glycerol, 0.5% BSA and 0.02% Sodium Azide.
Isotype	IgG
Storage	Store at 20°C for up to 1 year from the date of receipt, and avoid repeat freeze-thaw cycles.
Instruction	

TARGET INFORMATION

Gene ID	5292
Gene Symbol	PIM1
Uniprot ID	PIM1_HUMAN
Immunogen	The antiserum was produced against synthesized peptide derived from human Pim-1 around the phosphorylation site of Tyr309 at amino acid range 281-330
Immunogen Region	250-330
Specificity	Phospho-PIM1-Tyr309 polyclonal antibody (Serine/Threonine-Protein Kinase Pim-1) binds to endogenous Serine/Threonine-Protein Kinase Pim-1 at the amino acid region 250-330 only when phosphorylated at Tyr309.
Immunogen Sequence	



Western blot analysis of lysates from HUVEC cells treated with PMA 125ng/ml 30', using Pim-1 (Phospho-Tyr309) Antibody. The lane on the right is blocked with the phospho peptide.

This product is suitable for in-vitro studies under the RESEARCH USE ONLY [RUO] licence. This product must not be used as for diagnostic or other medical purposes.
 St John's Laboratory Ltd, Knowledge Dock Business Centre, University Way, London, E16 2RD | Tel: 0208 223 3081