

Anti-Phospho-PBK-Thr9 antibody (1-80) (STJ90490)

STJ90490

GENERAL INFORMATION

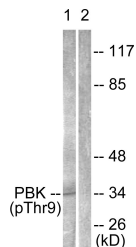
Product Type	Primary antibodies
Short Description	Rabbit polyclonal antibody anti-Phospho-Lymphokine-Activated Killer T-Cell-Originated Protein Kinase-Thr9 (1-80) is suitable for use in Western Blot, Immunohistochemistry, Immunofluorescence and ELISA research applications.
Applications	WB, IHC-P, IF-P, ELISA
Host/Source	Rabbit
Reactivity	Human, Rat, Mouse

PRODUCT PROPERTIES

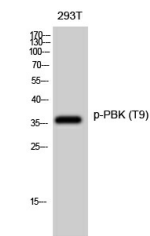
Clonality	Polyclonal
Clone ID	
Concentration	1 mg/mL
Conjugation	Unconjugated
Purification	The antibody was affinity-purified from rabbit anti-serum by affinity-chromatography.
Dilution Range	WB 1:500-1:2000 IHC 1:100-1:300 ELISA 1:40000
Formulation	PBS, 50% Glycerol, 0.5% BSA and 0.02% Sodium Azide.
Isotype	IgG
Storage Instruction	Store at 20°C for up to 1 year from the date of receipt, and avoid repeat freeze-thaw cycles.

TARGET INFORMATION

Gene ID	55872
Gene Symbol	PBK
Uniprot ID	TOPK_HUMAN
Immunogen	The antiserum was produced against synthesized peptide derived from human PBK/TOPK around the phosphorylation site of Thr9 at amino acid range 1-50
Immunogen Region	1-80
Specificity	Phospho-PBK-Thr9 polyclonal antibody (Lymphokine-Activated Killer T-Cell-Originated Protein Kinase) binds to endogenous Lymphokine-Activated Killer T-Cell-Originated Protein Kinase at the amino acid region 1-80 only when phosphorylated at Thr9.
Immunogen Sequence	



Western blot analysis of lysates from K562 cells treated with UV 30', using PBK/TOPK (Phospho-Thr9) Antibody. The lane on the right is blocked with the phospho peptide.



Western blot analysis of 293T cells using Phospho-PBK (T9) Polyclonal Antibody diluted at 1: 500

This product is suitable for in-vitro studies under the RESEARCH USE ONLY [RUO] licence. This product must not be used as for diagnostic or other medical purposes.
St John's Laboratory Ltd, Knowledge Dock Business Centre, University Way, London, E16 2RD | Tel: 0208 223 3081