

Anti-Phospho-FCGR2B-Tyr292 antibody (230-310) (STJ90485)

STJ90485

GENERAL INFORMATION

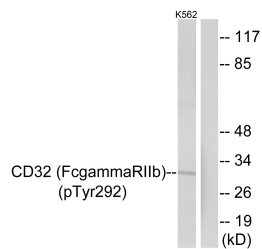
| | |
|--------------------------|---|
| Product Type | Primary antibodies |
| Short Description | Rabbit polyclonal antibody anti-Phospho-Low Affinity Immunoglobulin Gamma Fc Region Receptor II-B-Tyr292 (230-310) is suitable for use in Western Blot and ELISA research applications. |
| Applications | WB, ELISA |
| Host/Source | Rabbit |
| Reactivity | Human, Mouse, Rat |

PRODUCT PROPERTIES

| | |
|----------------------|--|
| Clonality | Polyclonal |
| Clone ID | |
| Concentration | 1 mg/mL |
| Conjugation | Unconjugated |
| Purification | The antibody was affinity-purified from rabbit anti-serum by affinity-chromatography. |
| Dilution | WB 1:500-1:2000 |
| Range | ELISA 1:10000 |
| Formulation | PBS, 50% Glycerol, 0.5% BSA and 0.02% Sodium Azide. |
| Isotype | IgG |
| Storage | Store at -20°C for up to 1 year from the date of receipt, and avoid repeat freeze-thaw cycles. |
| Instruction | |

TARGET INFORMATION

| | |
|---------------------------|--|
| Gene ID | 2213 |
| Gene Symbol | FCGR2B |
| Uniprot ID | FCG2B_HUMAN |
| Immunogen | The antiserum was produced against synthesized peptide derived from human CD32 around the phosphorylation site of Tyr292 at amino acid range 258-307 |
| Immunogen Region | 230-310 |
| Specificity | Phospho-FCGR2B-Tyr292 polyclonal antibody (Low Affinity Immunoglobulin Gamma Fc Region Receptor II-B) binds to endogenous Low Affinity Immunoglobulin Gamma Fc Region Receptor II-B at the amino acid region 230-310 only when phosphorylated at Tyr292. |
| Immunogen Sequence | |



Western blot analysis of lysates from K562 cells treated with PMA 125ng/ml 30', using CD32 (Phospho-Tyr292) Antibody. The lane on the right is blocked with the phospho peptide.