

Anti-Phospho-AKT1-Ser129 antibody (70-150) (STJ90484)

STJ90484

GENERAL INFORMATION

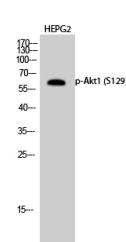
Product Type	Primary antibodies
Short Description	Rabbit polyclonal antibody anti-Phospho-Rac-Alpha Serine/Threonine-Protein Kinase-Ser129 (70-150) is suitable for use in Western Blot and ELISA research applications.
Applications	WB, ELISA
Host/Source	Rabbit
Reactivity	Human, Mouse, Rat

PRODUCT PROPERTIES

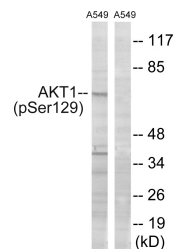
Clonality	Polyclonal
Clone ID	
Concentration	1 mg/mL
Conjugation	Unconjugated
Purification	The antibody was affinity-purified from rabbit anti-serum by affinity-chromatography.
Dilution	WB 1:500-1:2000
Range	ELISA 1:5000
Formulation	PBS, 50% Glycerol, 0.5% BSA and 0.02% Sodium Azide.
Isotype	IgG
Storage	Store at -20°C for up to 1 year from the date of receipt, and avoid repeat freeze-thaw cycles.
Instruction	

TARGET INFORMATION

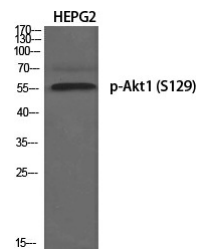
Gene ID	207
Gene Symbol	AKT1
Uniprot ID	AKT1_HUMAN
Immunogen	The antiserum was produced against synthesized peptide derived from human Akt around the phosphorylation site of Ser129 at amino acid range 95-144
Immunogen Region	70-150
Specificity	Phospho-AKT1-Ser129 polyclonal antibody (Rac-Alpha Serine/Threonine-Protein Kinase) binds to endogenous Rac-Alpha Serine/Threonine-Protein Kinase at the amino acid region 70-150 only when phosphorylated at Ser129.
Immunogen Sequence	



Western blot analysis of HEPG2 cells using Phospho-Akt1 (S129) Polyclonal Antibody diluted at 1: 1000



Western blot analysis of lysates from A549 cells treated with PMA 125ng/ml 30', using Akt (Phospho-Ser129) Antibody. The lane on the right is blocked with the phospho peptide.



Western blot analysis of various cells using Phospho-Akt1 (S129) Polyclonal Antibody diluted at 1: 1000

This product is suitable for in-vitro studies under the RESEARCH USE ONLY [RUO] licence. This product must not be used as for diagnostic or other medical purposes.
 St John's Laboratory Ltd, Knowledge Dock Business Centre, University Way, London, E16 2RD | Tel: 0208 223 3081