

Anti-Phospho-KDR-Tyr1059 antibody (990-1070) (STJ90482)

STJ90482

GENERAL INFORMATION

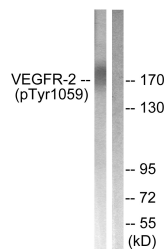
Product Type	Primary antibodies
Short Description	Rabbit polyclonal antibody anti-Phospho-Vascular Endothelial Growth Factor Receptor 2-Tyr1059 (990-1070) is suitable for use in Western Blot and ELISA research applications.
Applications	WB, ELISA
Host/Source	Rabbit
Reactivity	Human, Mouse, Rat

PRODUCT PROPERTIES

Clonality	Polyclonal
Clone ID	
Concentration	1 mg/mL
Conjugation	Unconjugated
Purification	The antibody was affinity-purified from rabbit anti-serum by affinity-chromatography.
Dilution	WB 1:500-1:2000
Range	ELISA 1:5000
Formulation	PBS, 50% Glycerol, 0.5% BSA and 0.02% Sodium Azide.
Isotype	IgG
Storage	Store at -20°C for up to 1 year from the date of receipt, and avoid repeat freeze-thaw cycles.
Instruction	

TARGET INFORMATION

Gene ID	3791
Gene Symbol	KDR
Uniprot ID	VGFR2_HUMAN
Immunogen	The antiserum was produced against synthesized peptide derived from human VEGFR2 around the phosphorylation site of Tyr1059 at amino acid range 1025-1074
Immunogen Region	990-1070
Specificity	Phospho-KDR-Tyr1059 polyclonal antibody (Vascular Endothelial Growth Factor Receptor 2) binds to endogenous Vascular Endothelial Growth Factor Receptor 2 at the amino acid region 990-1070 only when phosphorylated at Tyr1059.
Immunogen Sequence	



Western blot analysis of lysates from HepG2 cells treated with Na₃VO₄ 0.3nM 40', using VEGFR2 (Phospho-Tyr1059) Antibody. The lane on the right is blocked with the phospho peptide.