

Anti-Phospho-GTF2I-Tyr248 antibody (190-270) (STJ90480)

STJ90480

GENERAL INFORMATION

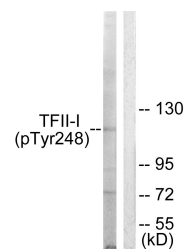
Product Type	Primary antibodies
Short Description	Rabbit polyclonal antibody anti-Phospho-General Transcription Factor II-I-Tyr248 (190-270) is suitable for use in Western Blot and ELISA research applications.
Applications	WB, ELISA
Host/Source	Rabbit
Reactivity	Human, Mouse, Rat

PRODUCT PROPERTIES

Clonality	Polyclonal
Clone ID	
Concentration	1 mg/mL
Conjugation	Unconjugated
Purification	The antibody was affinity-purified from rabbit anti-serum by affinity-chromatography.
Dilution	WB 1:500-1:2000
Range	ELISA 1:5000
Formulation	PBS, 50% Glycerol, 0.5% BSA and 0.02% Sodium Azide.
Isotype	IgG
Storage	Store at -20°C for up to 1 year from the date of receipt, and avoid repeat freeze-thaw cycles.
Instruction	

TARGET INFORMATION

Gene ID	2969
Gene Symbol	GTF2I
Uniprot ID	GTF2I_HUMAN
Immunogen	The antiserum was produced against synthesized peptide derived from human TFII-I around the phosphorylation site of Tyr248 at amino acid range 214-263
Immunogen Region	190-270
Specificity	Phospho-GTF2I-Tyr248 polyclonal antibody (General Transcription Factor II-I) binds to endogenous General Transcription Factor II-I at the amino acid region 190-270 only when phosphorylated at Tyr248.
Immunogen Sequence	



Western blot analysis of lysates from LOVO cells, using TFII-I (Phospho-Tyr248) Antibody. The lane on the right is blocked with the phospho peptide.