

Anti-Phospho-RET-Tyr1015 antibody (960-1040) (STJ90478)

STJ90478

GENERAL INFORMATION

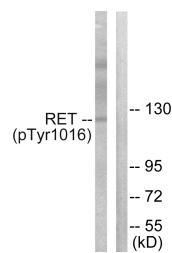
Product Type	Primary antibodies
Short Description	Rabbit polyclonal antibody anti-Phospho-Proto-Oncogene Tyrosine-Protein Kinase Receptor Ret-Tyr1015 (960-1040) is suitable for use in Western Blot and ELISA research applications.
Applications	WB, ELISA
Host/Source	Rabbit
Reactivity	Human, Mouse, Rat, Monkey

PRODUCT PROPERTIES

Clonality	Polyclonal
Clone ID	
Concentration	1 mg/mL
Conjugation	Unconjugated
Purification	The antibody was affinity-purified from rabbit anti-serum by affinity-chromatography.
Dilution	WB 1:500-1:2000
Range	ELISA 1:5000
Formulation	PBS, 50% Glycerol, 0.5% BSA and 0.02% Sodium Azide.
Isotype	IgG
Storage	Store at -20°C for up to 1 year from the date of receipt, and avoid repeat freeze-thaw cycles.
Instruction	

TARGET INFORMATION

Gene ID	5979
Gene Symbol	RET
Uniprot ID	RET_HUMAN
Immunogen	The antiserum was produced against synthesized peptide derived from human Ret around the phosphorylation site of Tyr1015 at amino acid range 991-1040
Immunogen Region	960-1040
Specificity	Phospho-RET-Tyr1015 polyclonal antibody (Proto-Oncogene Tyrosine-Protein Kinase Receptor Ret) binds to endogenous Proto-Oncogene Tyrosine-Protein Kinase Receptor Ret at the amino acid region 960-1040 only when phosphorylated at Tyr1015.
Immunogen Sequence	



Western blot analysis of lysates from COS7 cells treated with EGF 200ng/ml 30', using Ret (Phospho-Tyr1015) Antibody. The lane on the right is blocked with the phospho peptide.