

## Anti-Phospho-PPARG-Ser112 antibody (50-130) (STJ90476)

STJ90476

### GENERAL INFORMATION

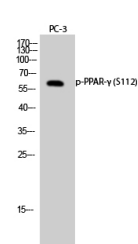
<b>Product Type</b>	Primary antibodies
<b>Short Description</b>	Rabbit polyclonal antibody anti-Phospho-Peroxisome Proliferator-Activated Receptor Gamma-Ser112 (50-130) is suitable for use in Western Blot and ELISA research applications.
<b>Applications</b>	WB, ELISA
<b>Host/Source</b>	Rabbit
<b>Reactivity</b>	Human, Mouse, Rat

### PRODUCT PROPERTIES

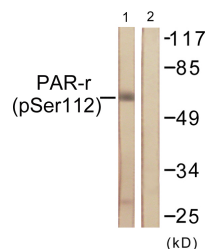
<b>Clonality</b>	Polyclonal
<b>Clone ID</b>	
<b>Concentration</b>	1 mg/mL
<b>Conjugation</b>	Unconjugated
<b>Purification</b>	The antibody was affinity-purified from rabbit anti-serum by affinity-chromatography.
<b>Dilution</b>	WB 1:500-1:2000
<b>Range</b>	ELISA 1:10000
<b>Formulation</b>	PBS, 50% Glycerol, 0.5% BSA and 0.02% Sodium Azide.
<b>Isotype</b>	IgG
<b>Storage</b>	Store at -20°C for up to 1 year from the date of receipt, and avoid repeat freeze-thaw cycles.
<b>Instruction</b>	

### TARGET INFORMATION

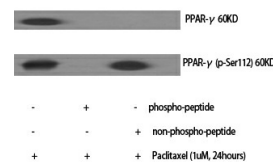
<b>Gene ID</b>	5468
<b>Gene Symbol</b>	PPARG
<b>Uniprot ID</b>	PPARG_HUMAN
<b>Immunogen</b>	The antiserum was produced against synthesized peptide derived from human PPAR-gamma around the phosphorylation site of Ser112 at amino acid range 78-127
<b>Immunogen Region</b>	50-130
<b>Specificity</b>	Phospho-PPARG-Ser112 polyclonal antibody (Peroxisome Proliferator-Activated Receptor Gamma) binds to endogenous Peroxisome Proliferator-Activated Receptor Gamma at the amino acid region 50-130 only when phosphorylated at Ser112.
<b>Immunogen Sequence</b>	



Western blot analysis of PC-3 cells using Phospho-PPAR-Gamma (S112) Polyclonal Antibody diluted at 1: 500



Western blot analysis of lysates from Jurkat cells treated with Pacitaxel 1uM 24h, using PPAR-gamma (Phospho-Ser112) Antibody. The lane on the right is blocked with the phospho peptide.



Western blot analysis of various cells using Phospho-PPAR-Gamma (S112) Polyclonal Antibody diluted at 1: 500

This product is suitable for in-vitro studies under the RESEARCH USE ONLY [RUO] licence. This product must not be used as for diagnostic or other medical purposes.  
St John's Laboratory Ltd, Knowledge Dock Business Centre, University Way, London, E16 2RD | Tel: 0208 223 3081