

Anti-Phospho-STXBP1-Ser313 antibody (250-330) (STJ90471)

STJ90471

GENERAL INFORMATION

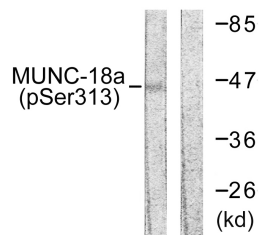
Product Type	Primary antibodies
Short Description	Rabbit polyclonal antibody anti-Phospho-Syntaxin-Binding Protein 1-Ser313 (250-330) is suitable for use in Western Blot and ELISA research applications.
Applications	WB, ELISA
Host/Source	Rabbit
Reactivity	Human, Mouse, Rat, Monkey

PRODUCT PROPERTIES

Clonality	Polyclonal
Clone ID	
Concentration	1 mg/mL
Conjugation	Unconjugated
Purification	The antibody was affinity-purified from rabbit anti-serum by affinity-chromatography.
Dilution	WB 1:500-1:2000
Range	ELISA 1:5000
Formulation	PBS, 50% Glycerol, 0.5% BSA and 0.02% Sodium Azide.
Isotype	IgG
Storage	Store at -20°C for up to 1 year from the date of receipt, and avoid repeat freeze-thaw cycles.
Instruction	

TARGET INFORMATION

Gene ID	6812
Gene Symbol	STXBP1
Uniprot ID	STXB1_HUMAN
Immunogen	The antiserum was produced against synthesized peptide derived from human MUNC-18a around the phosphorylation site of Ser313 at amino acid range 279-328
Immunogen Region	250-330
Specificity	Phospho-STXBP1-Ser313 polyclonal antibody (Syntaxin-Binding Protein 1) binds to endogenous Syntaxin-Binding Protein 1 at the amino acid region 250-330 only when phosphorylated at Ser313.
Immunogen Sequence	



Western blot analysis of lysates from COS7 cells treated with PMA (125ng/ml, 30') using MUNC-18a (Phospho-Ser313) Antibody. The lane on the right is blocked with the phospho peptide.