

Anti-Phospho-MITF-Ser180 antibody (120-200) (STJ90470)

STJ90470

GENERAL INFORMATION

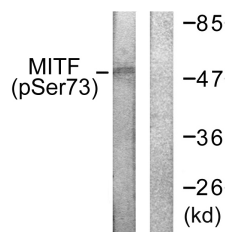
Product Type	Primary antibodies
Short Description	Rabbit polyclonal antibody anti-Phospho-Microphthalmia-Associated Transcription Factor-Ser180 (120-200) is suitable for use in Western Blot, Immunohistochemistry, Immunofluorescence and ELISA research applications.
Applications	WB, IHC-P, IF-P, ELISA
Host/Source	Rabbit
Reactivity	Human, Mouse, Monkey

PRODUCT PROPERTIES

Clonality	Polyclonal
Clone ID	
Concentration	1 mg/mL
Conjugation	Unconjugated
Purification	The antibody was affinity-purified from rabbit anti-serum by affinity-chromatography.
Dilution Range	WB 1:500-1:2000 IHC 1:100-1:300 ELISA 1:10000
Formulation	PBS, 50% Glycerol, 0.5% BSA and 0.02% Sodium Azide.
Isotype	IgG
Storage Instruction	Store at -20°C for up to 1 year from the date of receipt, and avoid repeat freeze-thaw cycles.

TARGET INFORMATION

Gene ID	4286
Gene Symbol	MITF
Uniprot ID	MITF_HUMAN
Immunogen	The antiserum was produced against synthesized peptide derived from human MITF around the phosphorylation site of Ser180/73 at amino acid range 151-200
Immunogen Region	120-200
Specificity	Phospho-MITF-Ser180 polyclonal antibody (Microphthalmia-Associated Transcription Factor) binds to endogenous Microphthalmia-Associated Transcription Factor at the amino acid region 120-200 only when phosphorylated at Ser180.
Immunogen Sequence	



This product is suitable for in-vitro studies under the RESEARCH USE ONLY [RUO] licence. This product must not be used as for diagnostic or other medical purposes.
 St John's Laboratory Ltd, Knowledge Dock Business Centre, University Way, London, E16 2RD | Tel: 0208 223 3081