

Anti-Phospho-CSF1R-Tyr809 antibody (750-830) (STJ90468)

STJ90468

GENERAL INFORMATION

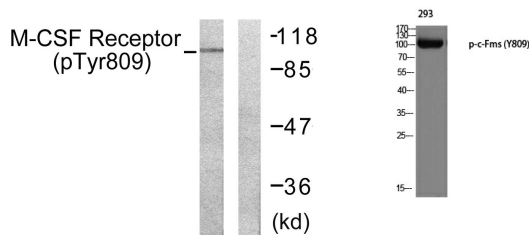
Product Type	Primary antibodies
Short Description	Rabbit polyclonal antibody anti-Phospho-Macrophage Colony-Stimulating Factor 1 Receptor-Tyr809 (750-830) is suitable for use in Western Blot and ELISA research applications.
Applications	WB, ELISA
Host/Source	Rabbit
Reactivity	Human, Mouse, Rat

PRODUCT PROPERTIES

Clonality	Polyclonal
Clone ID	
Concentration	1 mg/mL
Conjugation	Unconjugated
Purification	The antibody was affinity-purified from rabbit anti-serum by affinity-chromatography.
Dilution	WB 1:500-1:2000
Range	ELISA 1:5000
Formulation	PBS, 50% Glycerol, 0.5% BSA and 0.02% Sodium Azide.
Isotype	IgG
Storage Instruction	Store at -20°C for up to 1 year from the date of receipt, and avoid repeat freeze-thaw cycles.

TARGET INFORMATION

Gene ID	1436
Gene Symbol	CSF1R
Uniprot ID	CSF1R_HUMAN
Immunogen	The antiserum was produced against synthesized peptide derived from human M-CSF Receptor around the phosphorylation site of Tyr809 at amino acid range 781-830
Immunogen Region	750-830
Specificity	Phospho-CSF1R-Tyr809 polyclonal antibody (Macrophage Colony-Stimulating Factor 1 Receptor) binds to endogenous Macrophage Colony-Stimulating Factor 1 Receptor at the amino acid region 750-830 only when phosphorylated at Tyr809.
Immunogen Sequence	



Western blot analysis of lysates from 293 cells treated with LPS (100ng/ml, 30'), using M-CSF Receptor (Phospho-Tyr809) Antibody. The lane on the right is blocked with the phospho peptide.

Western blot analysis of 293 using p-c-Fms (Y809) antibody.

This product is suitable for in-vitro studies under the RESEARCH USE ONLY [RUO] licence. This product must not be used as for diagnostic or other medical purposes.
St John's Laboratory Ltd, Knowledge Dock Business Centre, University Way, London, E16 2RD | Tel: 0208 223 3081