

Anti-Phospho-LCK-Tyr192 antibody (130-210) (STJ90467)

STJ90467

GENERAL INFORMATION

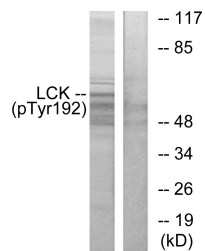
Product Type	Primary antibodies
Short Description	Rabbit polyclonal antibody anti-Phospho-Tyrosine-Protein Kinase Lck-Tyr192 (130-210) is suitable for use in Western Blot and ELISA research applications.
Applications	WB, ELISA
Host/Source	Rabbit
Reactivity	Human, Mouse, Rat

PRODUCT PROPERTIES

Clonality	Polyclonal
Clone ID	
Concentration	1 mg/mL
Conjugation	Unconjugated
Purification	The antibody was affinity-purified from rabbit anti-serum by affinity-chromatography.
Dilution Range	WB 1:500-1:2000 ELISA 1:10000
Formulation	PBS, 50% Glycerol, 0.5% BSA and 0.02% Sodium Azide.
Isotype	IgG
Storage	Store at -20°C for up to 1 year from the date of receipt, and avoid repeat freeze-thaw cycles.
Instruction	

TARGET INFORMATION

Gene ID	3932
Gene Symbol	LCK
Uniprot ID	LCK_HUMAN
Immunogen	The antiserum was produced against synthesized peptide derived from human Lck around the phosphorylation site of Tyr192 at amino acid range 161-210
Immunogen Region	130-210
Specificity	Phospho-LCK-Tyr192 polyclonal antibody (Tyrosine-Protein Kinase Lck) binds to endogenous Tyrosine-Protein Kinase Lck at the amino acid region 130-210 only when phosphorylated at Tyr192.
Immunogen Sequence	



Western blot analysis of lysates from Jurkat cells, using Lck (Phospho-Tyr192) Antibody. The lane on the right is blocked with the phospho peptide.