

Anti-Phospho-FoxO1/3-Ser322/S325 antibody (260-340) (STJ90465)

STJ90465

GENERAL INFORMATION

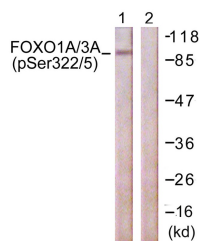
Product Type	Primary antibodies
Short Description	Rabbit polyclonal antibody anti-Phospho-Forkhead box protein O1 and Forkhead box protein O3-Ser322/S325 (260-340) is suitable for use in Western Blot, Immunohistochemistry, Immunofluorescence and ELISA research applications.
Applications	WB, IHC-P, IF-P, ELISA
Host/Source	Rabbit
Reactivity	Human, Mouse, Rat

PRODUCT PROPERTIES

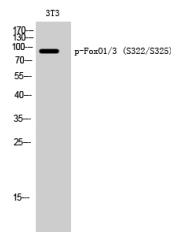
Clonality	Polyclonal
Clone ID	
Concentration	1 mg/mL
Conjugation	Unconjugated
Purification	The antibody was affinity-purified from rabbit anti-serum by affinity-chromatography.
Dilution Range	WB 1:500-1:2000 IHC 1:100-1:300 ELISA 1:5000
Formulation	PBS, 50% Glycerol, 0.5% BSA and 0.02% Sodium Azide.
Isotype	IgG
Storage Instruction	Store at -20°C for up to 1 year from the date of receipt, and avoid repeat freeze-thaw cycles.

TARGET INFORMATION

Gene ID	2308 2309
Gene Symbol	FOXO1 FOXO3
Uniprot ID	FOXO1_HUMAN FOXO3_HUMAN
Immunogen	The antiserum was produced against synthesized peptide derived from human FOXO1A/3A around the phosphorylation site of Ser322 and Ser325 at amino acid range 291-340
Immunogen Region	260-340
Specificity	Phospho-FoxO1/3-Ser322/S325 polyclonal antibody (Forkhead box protein O1 and Forkhead box protein O3) binds to endogenous Forkhead box protein O1 and Forkhead box protein O3 at the amino acid region 260-340 only when phosphorylated at Ser322/S325.
Immunogen Sequence	



Western blot analysis of lysates from NIH/3T3 cells treated with Wortmannin 40nM 24h, using FOXO1A/3A (Phospho-Ser322+Ser325) Antibody. The lane on the right is blocked with the phospho peptide.



Western blot analysis of 3T3 cells using Phospho-FoxO1/3 (S322/S325) Polyclonal Antibody

This product is suitable for in-vitro studies under the RESEARCH USE ONLY [RUO] licence. This product must not be used as for diagnostic or other medical purposes.
St John's Laboratory Ltd, Knowledge Dock Business Centre, University Way, London, E16 2RD | Tel: 0208 223 3081