

## Anti-Phospho-FLT3-Tyr599 antibody (540-620) (STJ90464)

STJ90464

### GENERAL INFORMATION

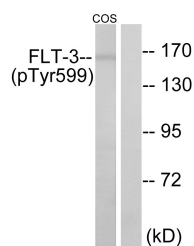
<b>Product Type</b>	Primary antibodies
<b>Short Description</b>	Rabbit polyclonal antibody anti-Phospho-Receptor-Type Tyrosine-Protein Kinase Flt3-Tyr599 (540-620) is suitable for use in Western Blot and ELISA research applications.
<b>Applications</b>	WB, ELISA
<b>Host/Source</b>	Rabbit
<b>Reactivity</b>	Human, Mouse, Monkey

### PRODUCT PROPERTIES

<b>Clonality</b>	Polyclonal
<b>Clone ID</b>	
<b>Concentration</b>	1 mg/mL
<b>Conjugation</b>	Unconjugated
<b>Purification</b>	The antibody was affinity-purified from rabbit anti-serum by affinity-chromatography.
<b>Dilution</b>	WB 1:500-1:2000
<b>Range</b>	ELISA 1:5000
<b>Formulation</b>	PBS, 50% Glycerol, 0.5% BSA and 0.02% Sodium Azide.
<b>Isotype</b>	IgG
<b>Storage</b>	Store at -20°C for up to 1 year from the date of receipt, and avoid repeat freeze-thaw cycles.
<b>Instruction</b>	

### TARGET INFORMATION

<b>Gene ID</b>	2322
<b>Gene Symbol</b>	FLT3
<b>Uniprot ID</b>	FLT3_HUMAN
<b>Immunogen</b>	The antiserum was produced against synthesized peptide derived from human FLT3 around the phosphorylation site of Tyr599 at amino acid range 565-614
<b>Immunogen Region</b>	540-620
<b>Specificity</b>	Phospho-FLT3-Tyr599 polyclonal antibody (Receptor-Type Tyrosine-Protein Kinase Flt3) binds to endogenous Receptor-Type Tyrosine-Protein Kinase Flt3 at the amino acid region 540-620 only when phosphorylated at Tyr599.
<b>Immunogen Sequence</b>	



Western blot analysis of lysates from COS7 cells treated with EGF 200ng/ml 30', using FLT3 (Phospho-Tyr599) Antibody. The lane on the right is blocked with the phospho peptide.