

Anti-Phospho-AKT1S1-Thr246 antibody (180-260) (STJ90462)

STJ90462

GENERAL INFORMATION

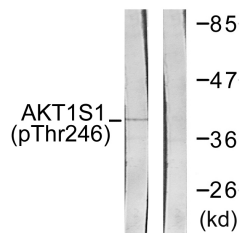
Product Type	Primary antibodies
Short Description	Rabbit polyclonal antibody anti-Phospho-Proline-Rich Akt1 Substrate 1-Thr246 (180-260) is suitable for use in Western Blot, Immunohistochemistry, Immunofluorescence and ELISA research applications.
Applications	WB, IHC-P, IF-P, ELISA
Host/Source	Rabbit
Reactivity	Human, Mouse, Rat

PRODUCT PROPERTIES

Clonality	Polyclonal
Clone ID	
Concentration	1 mg/mL
Conjugation	Unconjugated
Purification	The antibody was affinity-purified from rabbit anti-serum by affinity-chromatography.
Dilution	WB 1:500-1:2000
Range	ELISA 1:10000
Formulation	PBS, 50% Glycerol, 0.5% BSA and 0.02% Sodium Azide.
Isotype	IgG
Storage Instruction	Store at -20°C for up to 1 year from the date of receipt, and avoid repeat freeze-thaw cycles.

TARGET INFORMATION

Gene ID	84335
Gene Symbol	AKT1S1
Uniprot ID	AKTS1_HUMAN
Immunogen	The antiserum was produced against synthesized peptide derived from human Akt1 S1 around the phosphorylation site of Thr246 at amino acid range 207-256
Immunogen Region	180-260
Specificity	Phospho-AKT1S1-Thr246 polyclonal antibody (Proline-Rich Akt1 Substrate 1) binds to endogenous Proline-Rich Akt1 Substrate 1 at the amino acid region 180-260 only when phosphorylated at Thr246.
Immunogen Sequence	



Western blot analysis of lysates from HepG2 cells treated with PDGF 50ng/ml 30', using Akt1 S1 (Phospho-Thr246) Antibody. The lane on the right is blocked with the phospho peptide.