

Anti-Phospho-NFKBIB-Thr19 antibody (1-80) (STJ90460)

STJ90460

GENERAL INFORMATION

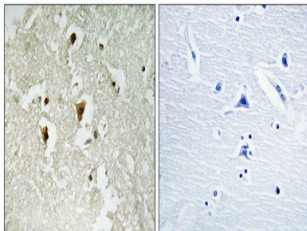
Product Type	Primary antibodies
Short Description	Rabbit polyclonal antibody anti-Phospho-Nf-Kappa-B Inhibitor Beta-Thr19 (1-80) is suitable for use in Western Blot, Immunohistochemistry, Immunofluorescence and ELISA research applications.
Applications	WB, IHC-P, IF-P, ELISA
Host/Source	Rabbit
Reactivity	Human, Rat, Mouse

PRODUCT PROPERTIES

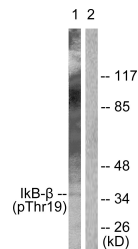
Clonality	Polyclonal
Clone ID	
Concentration	1 mg/mL
Conjugation	Unconjugated
Purification	The antibody was affinity-purified from rabbit anti-serum by affinity-chromatography.
Dilution Range	WB 1:500-1:2000 IHC 1:100-1:300 ELISA 1:5000
Formulation	PBS, 50% Glycerol, 0.5% BSA and 0.02% Sodium Azide.
Isotype	IgG
Storage Instruction	Store at -20°C for up to 1 year from the date of receipt, and avoid repeat freeze-thaw cycles.

TARGET INFORMATION

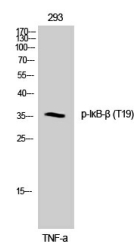
Gene ID	4793
Gene Symbol	NFKBIB
Uniprot ID	IKBB_HUMAN
Immunogen	The antiserum was produced against synthesized peptide derived from human IkappaB-beta around the phosphorylation site of Thr19 at amino acid range 4-53
Immunogen Region	1-80
Specificity	Phospho-NFKBIB-Thr19 polyclonal antibody (Nf-Kappa-B Inhibitor Beta) binds to endogenous Nf-Kappa-B Inhibitor Beta at the amino acid region 1-80 only when phosphorylated at Thr19.
Immunogen Sequence	



Immunohistochemical analysis of paraffin-embedded Human brain. Antibody was diluted at 1:100 (4°C overnight). High-pressure and temperature Tris-EDTA, pH8.0 was used for antigen retrieval. Negative control (right) obtained from antibody was pre-absorbed by immunogen peptide.



Western blot analysis of lysates from 293 cells treated with TNF- α 20ng/ml 30', using IkappaB-beta (Phospho-Thr19) Antibody. The lane on the right is blocked with the phospho peptide.



Western blot analysis of 293 cells using Phospho-Ikappa B-Beta (T19) Polyclonal Antibody